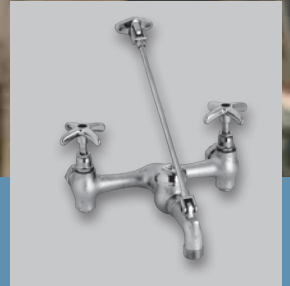




## COMMERCIAL PLUMBING PRODUCTS



**EXCEEDING YOUR EXPECTATIONS<sup>SM</sup>**

# Commercial Plumbing Products: Table of Contents

## FIXTURES SECTION

<b><u>PRODUCT CATEGORY</u></b>	<b><u>PAGE</u></b>
Urinals .....	1
High Efficiency Urinals .....	2
Two-Piece Toilets .....	3-5
High Efficiency Toilets (HET) .....	4-5
Elementary Toilets .....	5
Toilet Seats .....	6
Flush-Valve Toilets .....	6
Wall-Mount Lavatories .....	7
Countertop Lavatories .....	8-9
Undercounter Lavatories .....	9
Stainless Steel Sinks .....	10-11
Bath and Shower Accessories .....	12
Floor and Laundry Sinks and Accessories .....	13-1

## FAUCETS SECTION

Heavy Duty Commercial Faucets .....	16
Lavatory Faucets .....	17-18
Bar Faucets .....	18
Kitchen Faucets .....	19-20
Service Faucets .....	20-22

## ROUGH SECTION

Access Doors .....	23
Sink and Drain Accessories .....	23-24
Trap Primers and Accessories .....	25
Lavatory Supply Kits	
Closet Supply Kits .....	25-26
Heavy Pattern Supply Kits	
ADA Lavatory Supply Kit .....	26
Individual Stops	
Heavy Individual Stops .....	27
Water Hammer Arrestors .....	28
No-Hub Couplings .....	29

# Urinals

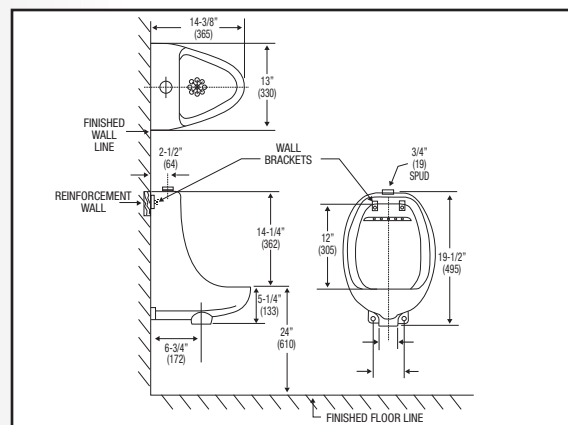
Dimensions may vary (+) or (-) 1/4". Numbers in () are mm.



## PF1800WH

- 1.0 gpf / 3.8 Lpf
- Bottom outlet
- Integral flushing rim
- Wash-out flushing action
- 3/4" (19mm) top inlet spud
- 1 1/2" (38.1mm) outlet spud for exposed trap connection
- Hanging brackets included
- Flush valve not included
- Available in white (WH) only
- ADA compliant\*

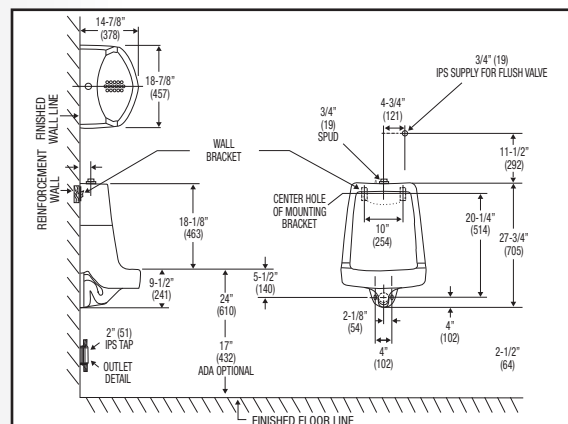
Check for availability



## PF1810WH

- 1.0 gpf / 3.8 Lpf
- Integral flushing rim and trap
- Wash-out flushing action
- 3/4" (19mm) top inlet spud
- 2" (51mm) female flanged outlet connection
- Extended privacy shields
- Hanging brackets included
- Flush valve not included
- Available in white (WH) only
- ADA compliant\*

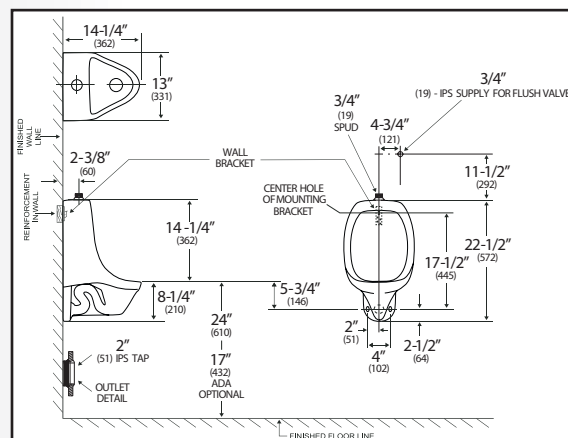
Check for availability



## PF1807WH

- 1.0 gpf / 3.8 Lpf
- Integral flushing rim and trap
- Siphon-jet flushing action
- 3/4" (19mm) top inlet spud
- 2" (51mm) outlet IPS
- Hanging brackets included
- Flush valve not included
- Available in white (WH) only
- ADA compliant\*

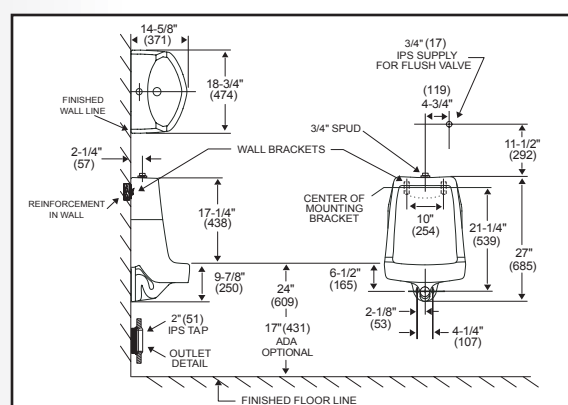
Check for availability



## PF1817WH

- 1.0 gpf / 3.8 Lpf
- Integral flushing rim and trap
- Siphon-jet flushing
- 3/4" (19mm) top inlet spud
- 2" (51mm) female flanged outlet connection
- Extended privacy shields
- Hanging brackets included
- Flush valve not included
- Available in white (WH) only
- ADA compliant\*

Check for availability

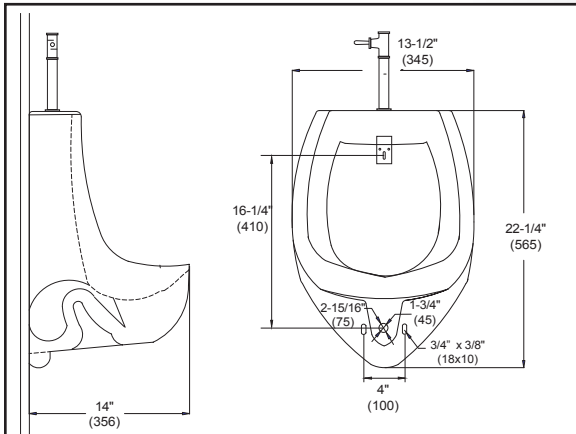


\*All products listed as ADA compliant meet ADA requirements as stated in the American Disabilities Act when installed in accordance with ADA guidelines.

PROFLO fixtures have a one-year limited warranty and meet or exceed the following standards: ASME A112.19.2; IAPMO/CUPC listed; CSA approved.

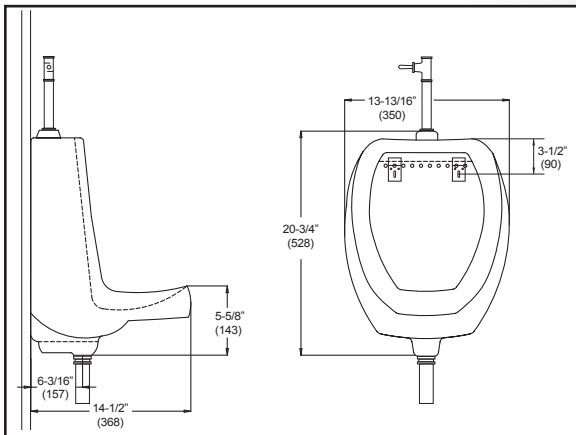
# High Efficiency Urinals

Dimensions may vary (+) or (-) 1/4". Numbers in () are mm.



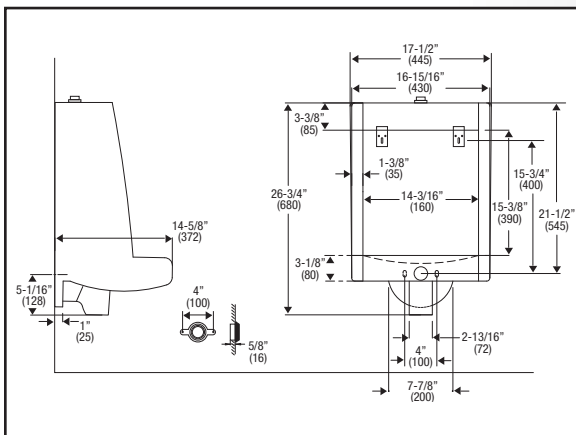
## PF1815WH

- High efficiency 0.5-1.0 gpf / 1.9-3.8 Lpf
- Rear outlet
- Integral flushing rim and trap
- Siphon-jet flushing action
- 3/4" (19mm) top inlet spud
- 2" (51mm) NPT inside thread outlet
- Hanging brackets included
- Flush valve not included
- Available in white (WH) only
- ADA compliant\*



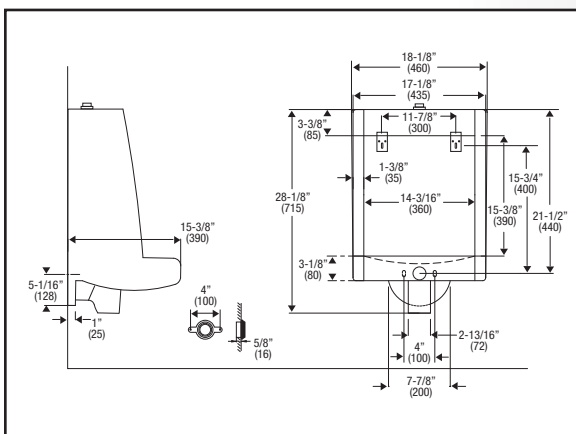
## PF1805WH

- High efficiency 0.5-1.0 gpf / 1.9-3.8 Lpf
- Bottom outlet
- Integral flushing rim and strainer
- Wash-out flushing action
- 3/4" (19mm) top inlet spud
- 1-1/2" (38.1mm) outlet for exposed trap connection
- Wall-hanging brackets included
- Flush valve not included
- Available in white (WH) only
- ADA compliant\*



## PF1825WH

- High efficiency 0.5-1.0 gpf / 1.9-3.8 Lpf
- Half stall, rear outlet
- Integral flushing rim and trap
- Wash-out flushing action
- 3/4" (19mm) top inlet spud
- 2" (51mm) NPT inside thread outlet
- Hanging brackets included
- Flush valve not included
- Available in white (WH) only
- ADA compliant\*



## PF1835WH

- High efficiency 0.5-1.0 gpf / 1.9-3.8 Lpf
- Half stall, rear outlet
- Integral flushing rim and trap
- Siphon-jet flushing action
- 3/4" (19mm) top inlet spud
- 2" (51mm) NPT inside thread outlet
- Hanging brackets included
- Flush valve not included
- Available in white (WH) only
- ADA compliant\*





Dimensions may vary (+) or (-) 1/4". Numbers in () are mm.

## Two-Piece Toilets

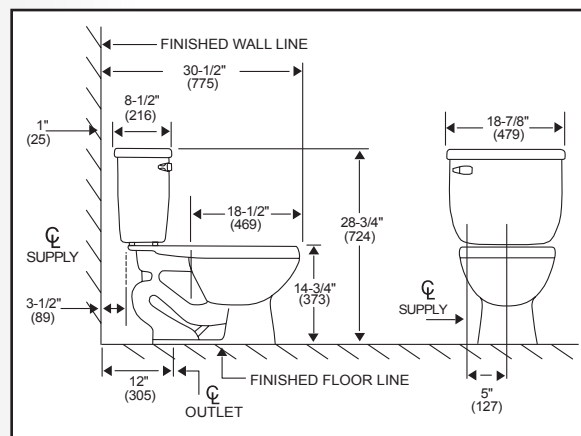


### PF1201WH, PF3112WH (bowl & tank)

- 1.6 gpf / 6.0 Lpf
- Elongated bowl
- Stylish tank design
- Integral rim jets
- Large 8" x 9" (203.2mm x 228.6mm) water surface
- 2" (51mm) trapway
- Sanitary bar for ease of cleaning
- Anti-siphon ballcock prevents back-siphoning
- 10" (254mm), 14" (355.6mm), RH trip lever, and lined tanks are also available
- Available in white (WH) and biscuit (BS)

### PF1203WH

- 17" (432mm) ADA compliant\* bowl height

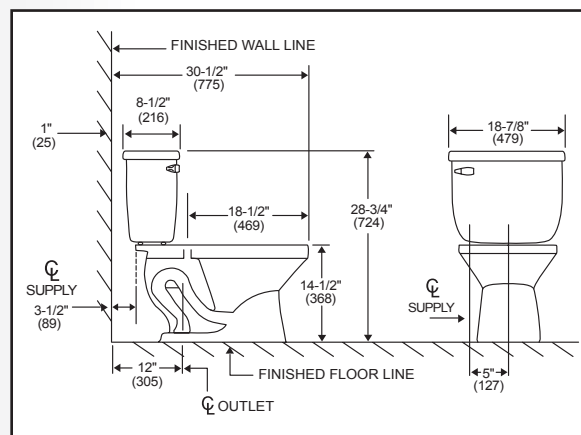


### PF2201WH, PF3212WH (bowl & tank)

- 1.6 gpf / 6.0 Lpf
- Elongated bowl
- Stylish tank design
- Continuous integral open rim
- Large 8" x 9" (203.2mm x 228.6mm) water surface
- 2" (51mm) glazed trapway
- Sanitary bar for ease of cleaning
- Anti-siphon ballcock prevents back-siphoning
- 10" (254mm), 14" (355.6mm), RH trip lever, and lined tanks are also available
- Available in white (WH) and biscuit (BS)

### PF2203WH

- 17" (432mm) ADA compliant\* bowl height

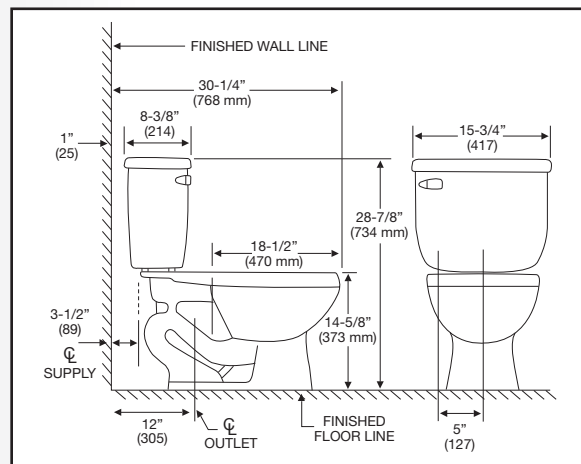


### PF1401WH, PF5112WH (bowl & tank)

- Two-piece vitreous china, available 10", 12", 14" RI
- Gravity fed (1.6gpf/6.0Lpf)
- Box rim
- 2" fully glazed trapway
- 8" x 9" water surface
- Anti-siphon fill valve
- Close coupled tank with cover
- Quick connect, 2 bolt tank to bowl installation
- Standard chrome trip lever
- Offered on the West Coast Only
- 10" (254mm), 14" (355.6mm), RH trip lever, and lined tanks are also available
- Available in white (WH) and biscuit (BS)

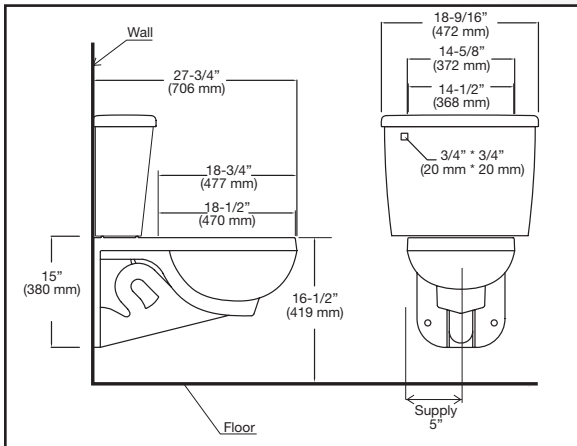
### PF1403WH

- 17" (432mm) ADA compliant\* bowl height



# Two-Piece Toilets

Dimensions may vary (+) or (-) 1/4". Numbers in () are mm.



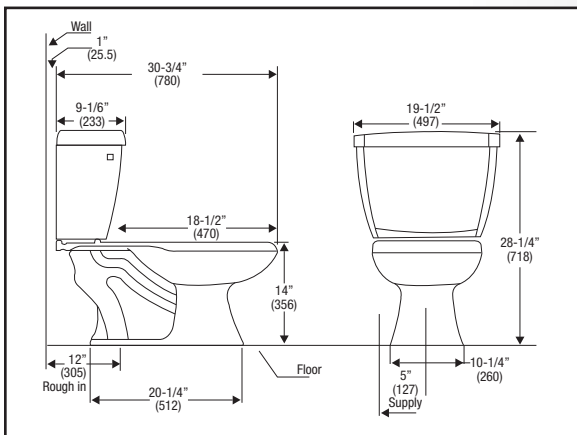
**PF1705WH** Wall mount bowl, white

**PF1710WH** 1.6 gpf tank, white

- Wall-mounted Gravity Fed Toilet
- 2" fully glazed trapway
- Elongated Bowl
- Meets ADA requirements
- Standard seat installations (sold separately)
- Siphon Jet Bowl
- Meets ASME A112.19.2, CSA B45



# High Efficiency Toilets



**PF1601PAWH, PF1612PAWH** (bowl & tank)

- Elongated bowl
- Uses 35% less water than standard low-consumption toilets
- 1.0 gpf/3.79 Lpf high efficiency with **Pressure Assist**
- Sloan FLUSHMATE IV System
- Siphon-jet flushing action
- Large 13-1/2" x 11" (342.9mm x 279.4mm) water surface
- 2" (51mm) fully-glazed trapway
- EPA WaterSense certified
- Anti-siphon ballcock prevents back-siphoning
- RH trip lever tanks are also available (PF1612PARWH)
- Available in white (WH) only



**PF1603WH**

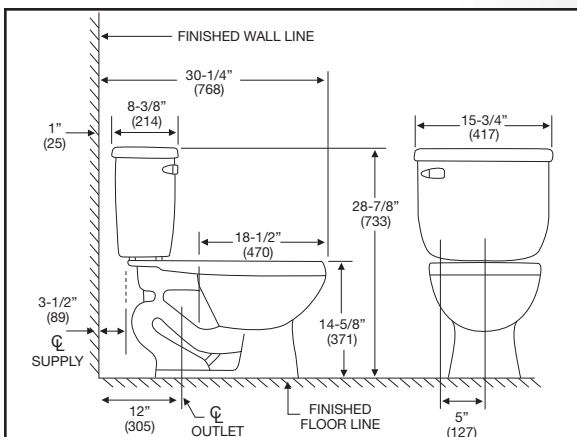
- 17" (432mm) ADA compliant\* bowl height

**PF1600PAWH**

- Round Front bowl

**PF1605PAWH**

- Elongated bowl
- Floor mount back outlet



**PF9301WH, PF9312WH** (bowl & tank)

- Elongated bowl
- Dual-flush, high efficiency 1.6 gpf / 6.0 Lpf or 1.1 gpf / 4.16 Lpf
- Gravity-fed box rim
- 9" x 7" (228.6mm x 177.8mm) water surface
- 2" (51mm) glazed trapway
- Color-matched trip lever
- EPA WaterSense certified

**PF9303WH**

- 17" (432mm) ADA compliant\* bowl height
- Available in white (WH) only



Dimensions may vary (+) or (-) 1/4". Numbers in () are mm.

## High Efficiency Toilets

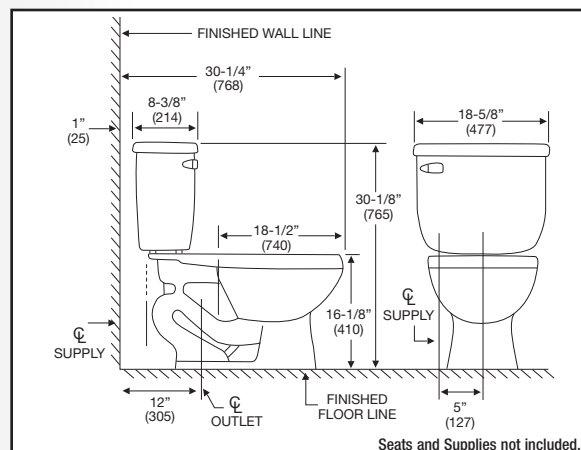


### PF9401WH, PF9412WHC (bowl & tank)

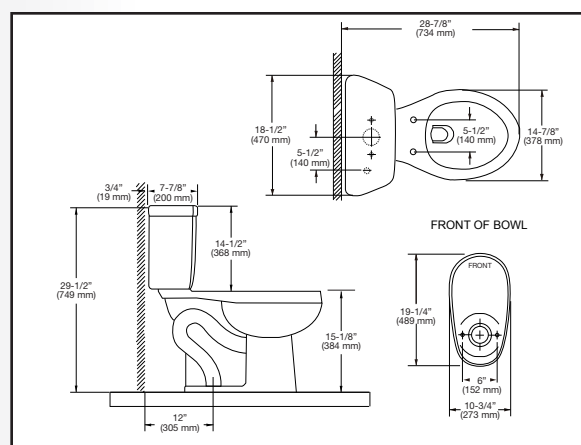
- Elongated bowl
- Uses 20% less water than standard low-consumption toilets
- High efficiency 1.28 gpf / 4.85 Lpf
- High performance 3" (76.2mm) flush valve
- Gravity-fed, double-jetted box rim
- 8-1/2" x 7" (215.9mm x 177.8mm) water surface
- 2" (51mm) glazed trapway
- EPA WaterSense certified
- RH trip lever tanks are also available
- Available in white (WH) and Biscuit (BS)
- Available in round front, elongated and ADA with 10", 12" or 14" RL, RH trip lever or insulated tank

### PF9403WH

- 17" (432mm) ADA compliant\* bowl height
- Available in white (WH) and Biscuit (BS)



Seats and Supplies not included.



### PF9101WH, PF9112WHC (bowl & tank)

- Elongated bowl
- Uses 20% less water than standard low-consumption toilets
- High efficiency 1.28 gpf / 4.85 Lpf
- High performance 3" (76.2mm) flush valve
- Gravity-fed, double-jetted box rim
- 8-1/2" x 7" (215.9mm x 177.8mm) water surface
- 2" (51mm) glazed trapway
- EPA WaterSense certified

### PF9103WH

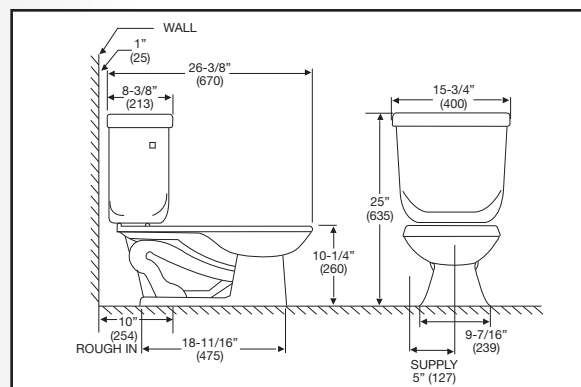
- 17" (432mm) ADA compliant\* bowl height
- Available in white (WH) only

## Elementary Toilets



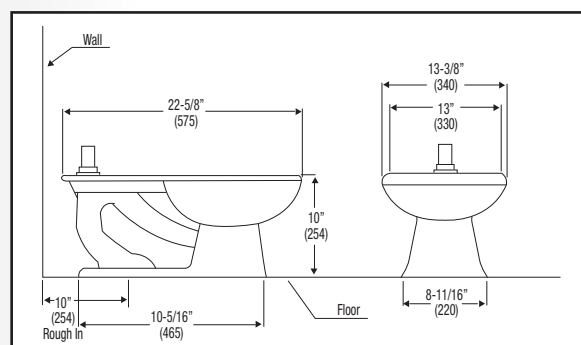
### PF1704BBWH, PF1712BBWH (bowl & tank)

- Round front bowl
- 1.6 gpf / 6.0 Lpf gravity fed
- Siphon-jet flushing action
- 10-1/4" (260mm) high bowl for child use
- 10" (254mm) rough-in
- 3" (76.2mm) flush valve
- Sanitary bar on bowl
- Two-bolt tank-to-bowl installation
- Available in white (WH) only



### PF1700BB

- Flush valve round-front bowl
- 10" (254mm) high bowl
- 1.6 gpf/6.0 Lpf



## ***Toilet Seats***

Dimensions may vary (+) or (-) 1/4". Numbers in () are mm.



**PFTSBB1000WH**

- For use with elementary bowls PF1704BB and PF1700BB
- Round front only
- Available in white (WH) only



**PFTSCOF2000WH**

## PFTSCOFH2000WH - Extra Heavy Duty

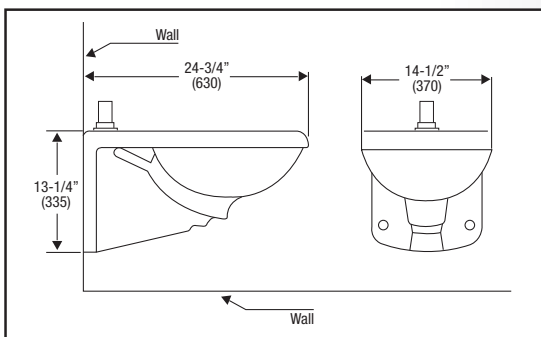
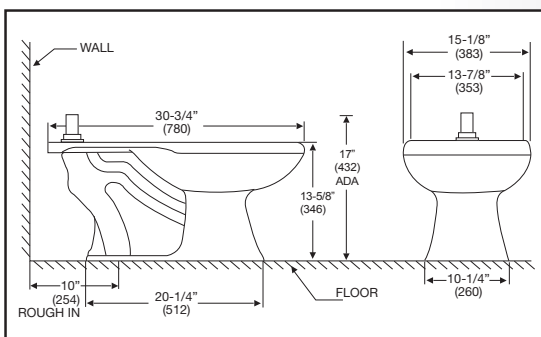
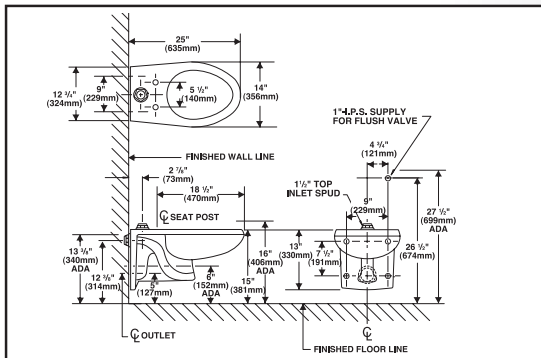
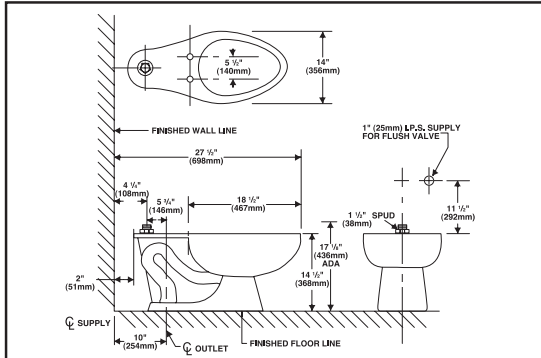
## PFTSC0FA2000WH - Anti-Microbial

**PFTSCOF2000BL - Black**

**PFTSC0FC2000WH** - Open Front with cover

- Elongated open-front less cover
- Heavy-weight molded solid plastic
- 304 Series stainless hardware
- Molded in color-matched bumpers
- Slip-resistant pads
- Self-sustaining check hinge

## ***Flush-Valve Toilets***



# PF1701WH

- 1.6 gpf / 6.0 Lpf
- Floor-mounted bowl
- Siphon-jet flushing
- 1-1/2" (38.1mm) top inlet spud
- Integral rim jets for a cleaner bowl
- Large 2" (51mm) trapway
- Available in white (WH) only

**PF1703WH**

- 17" (432mm) ADA compliant\* bowl height
  - Available in white (WH) only
- Check for availability



## PF1711WH

- 1.6 gpf / 6.0 Lpf
  - Wall-mounted bowl
  - Siphon-jet flushing
  - 1-1/2" (38.1mm) top inlet spud
  - Integral rim jets for a cleaner bowl
  - Large 2" (51mm) trapway
  - ADA compliant\*
  - Available in white (WH) only
- Check for availability



**PF1721WH**

- High efficiency 1.28 gpf / 4.85 Lpf
- Uses 20% less water than 1.6 gpf / 6.0 Lpf toilets
- Elongated front
- Siphon-jet flushing action
- 1-1/2" (38.1mm) top inlet spud
- 12-1/4" x 11-1/4" (311mm x 286mm) water surface
- Compatible with 1.28 gpf, 1.6 gpf and Dual Flush flush valves
- Available in white (WH) only



## PF1723WH

- 17" (432mm) ADA compliant\* bowl height
- Available in white (WH) only

## PF1731WH

- High efficiency 1.28 gpf / 4.85 Lpf
- Uses 20% less water than 1.6 gpf / 6.0 Lpf toilets
- Elongated front
- Siphon-jet flushing action
- 1-1/2" (38.1mm) top inlet spud
- 12 x 10" (305mm x 254mm) water surface
- Compatible with 1.28 gpf, 1.6 gpf and Dual Flush flush valves
- ADA compliant\*
- Available in white (WH) only



Dimensions may vary (+) or (-) 1/4". Numbers in () are mm.

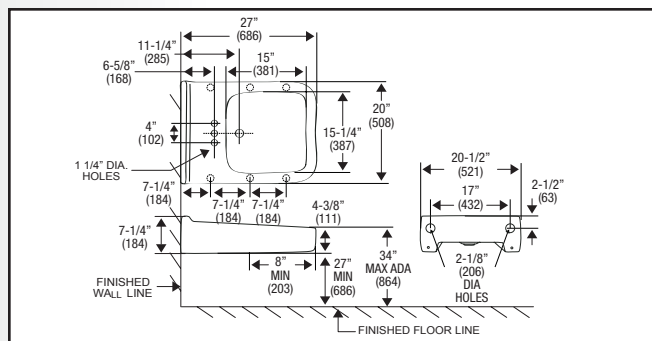
# Wall-Mount Lavatories



## PF5704

- 27" x 20" (686mm x 508mm) lavatory
- 4" (102mm) centers
- Concave front for wheelchair accessibility
- Contoured side ledges for arm rest
- Punched for concealed arm carriers (not included)
- Requires carrier
- ADA compliant\*
- Available in white (WH) only

Check for availability

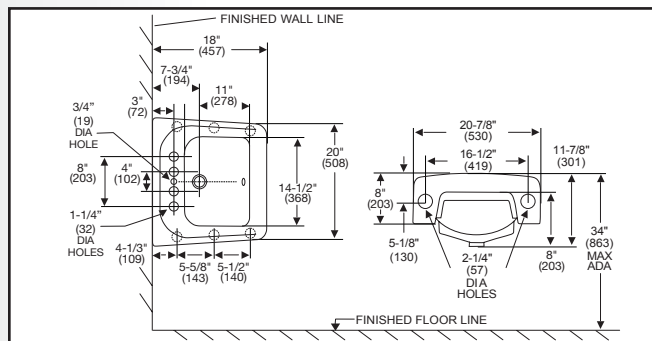


## PF5504 – 4" (102mm) centers

## PF5508 – 8" (203mm) centers

- 20" x 18" (508mm x 457mm) lavatory
- 5" (127mm) backsplash
- Concealed front overflow
- Punched for concealed arm carriers (not included)
- Includes wall hanger
- ADA compliant\*
- Available in white (WH) only

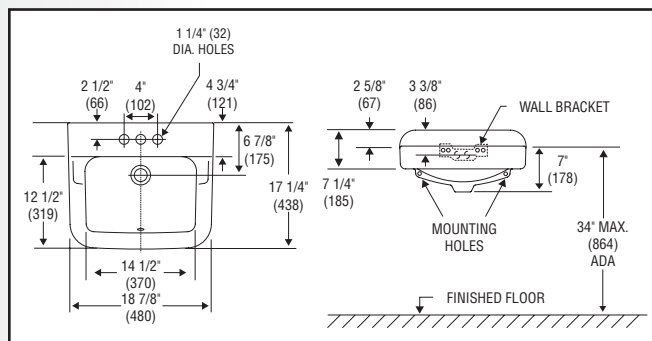
Check for availability



## PF5404

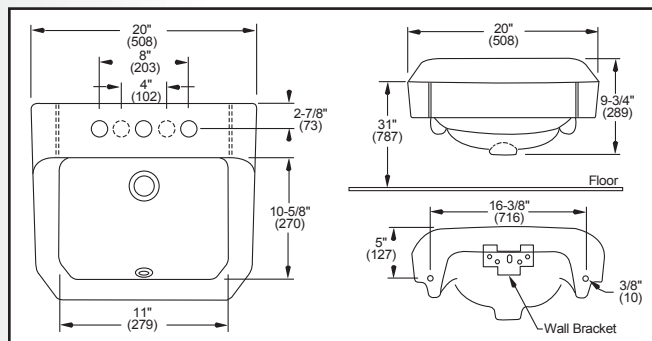
- 19" x 17" (483mm x 432mm) lavatory
- 4" (102mm) centers
- Anti-splash rim
- Twin cast-in soap depressions
- Concealed front overflow
- Includes wall hanger
- ADA compliant\*
- Available in white (WH) only

Check for availability



## PF5414

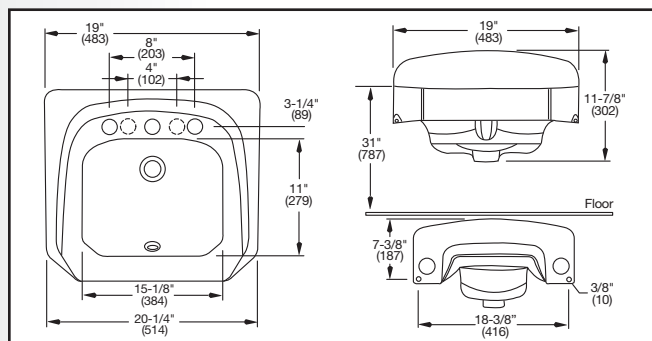
- 19" x 17" (483mm x 432mm) lavatory
- 4" (102mm) centers
- Anti-splash rim
- Concealed front overflow
- Includes wall hanger
- ADA compliant\*
- Available in white (WH) only



## PF5514 – 4" (102mm) centers

## PF5518 – 8" (203mm) centers

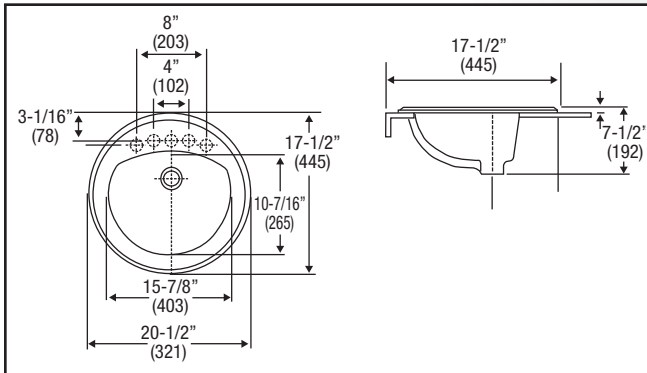
- 20" x 18" (508mm x 457mm) lavatory
- High backsplash
- Concealed front overflow
- Concealed arm carrier connection (not included)
- Includes wall bracket
- ADA compliant\*
- Available in white (WH) only





# Countertop Lavatories

Dimensions may vary (+) or (-) 1/4". Numbers in () are mm.

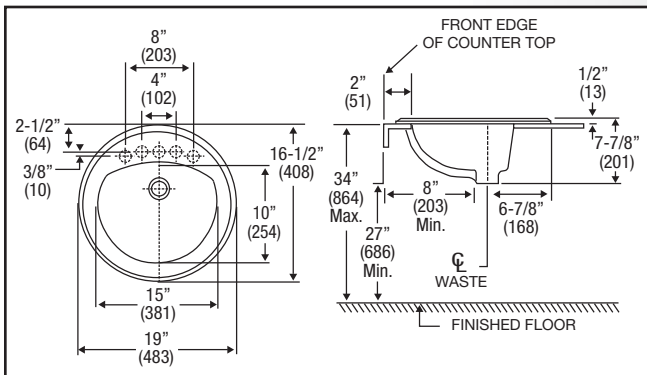


**PF20171** - 1-hole in white only

**PF20174** - 4" (102mm) centers

**PF20178** - 8" (203mm) centers

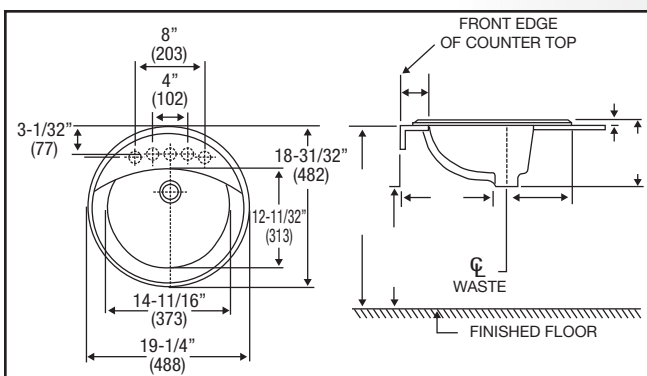
- Vitreous china
- 20-1/2" x 17-1/2" (521mm x 445mm) outside dimensions, self-rimming
- Concealed front overflow
- Includes adhesive sealant
- Can be mounted for ADA installation\*
- Available in white (WH) and biscuit (BS)



**PF19164** - 4" (102mm) centers

**PF19168** - 8" (203mm) centers

- Vitreous china
- 19" x 16" (483mm x 406mm) outside dimensions, self-rimming
- Concealed front overflow
- Can be mounted for ADA installation\*
- Available in white (WH) and biscuit (BS)



**PF191R** - 1-hole in white only

**PF194R** - 4" (102mm) centers

**PF198R** - 8" (203mm) centers

- Vitreous china
- 19-1/4" (488mm) outside dimension, round self-rimming
- Concealed front overflow
- Can be mounted for ADA installation\*
- Available in white (WH) and biscuit (BS)



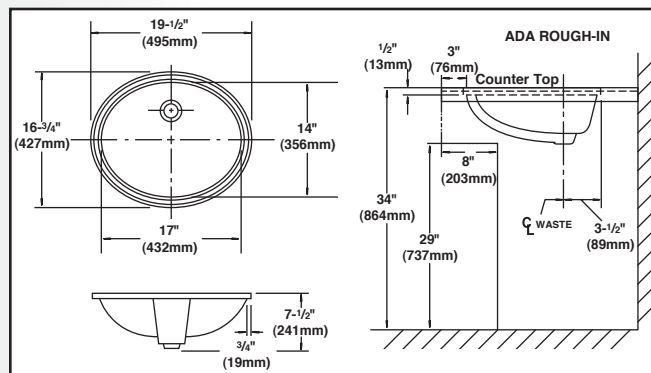
Dimensions may vary (+) or (-) 1/4". Numbers in () are mm.

# Undercounter Lavatories



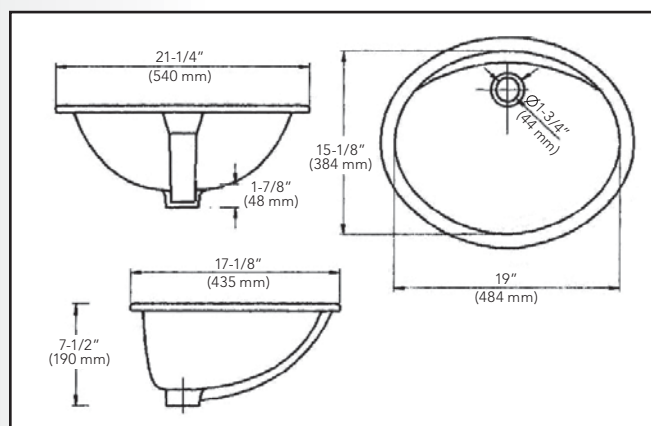
## PF1714U

- Vitreous china
- 16-3/4" x 14" (427mm x 356mm) reveal
- Concealed front overflow
- Mounting clips included
- Interior depth: 6-1/2" (165.1mm)
- Can be mounted for ADA installation\*
- Available in white (WH) and biscuit (BS)



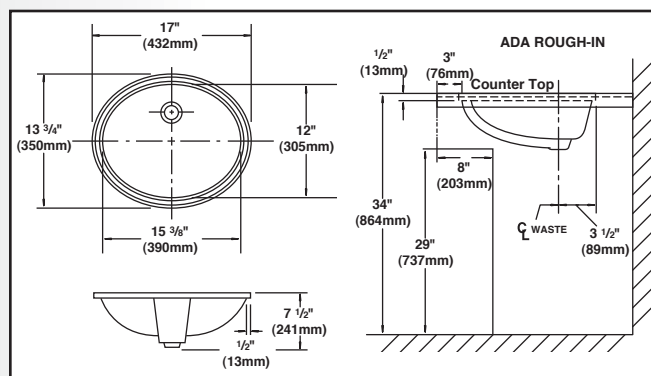
## PF1915UWH

- Vitreous china
- 19" x 15" (reveal)
- Oval undercounter lavatory
- Concealed front overflow
- Can be mounted for ADA installation
- Mounting clips included
- Available in white and biscuit



## PF1512U

- Vitreous china
- 15-3/8" x 12" (390mm x 305mm) reveal
- Concealed front overflow
- Mounting clips included
- Interior depth: 5-3/4" (146mm)
- Can be mounted for ADA installation\*
- Available in white (WH) and biscuit (BS)



# Stainless Steel Sinks

Dimensions may vary (+) or (-) 1/4". Numbers in () are mm.



**PFT171962** - 2-hole, 22-gauge, 6" (152mm)

**PFT171963** - 3-hole, 22-gauge, 6" (152mm)

**PFT171973** - 3-hole, 22-gauge, 7" (177mm)

- Stainless single bowl sink
- Self-rimming
- Sink clips included
- Available with 2 or 3 faucet holes
- 22 gauge
- Overall size 17" x 19"
- Bowl size 14" x 14"
- Bowl depth 6-1/8"
- Drain diameter 3-1/2"

**PFT2521553C** - Center Drain 3-hole, 22-gauge, 5-1/2" (140mm)

**PFT2521553L** - Left Hand Drain 3-hole, 22-gauge, 5-1/2" (140mm)

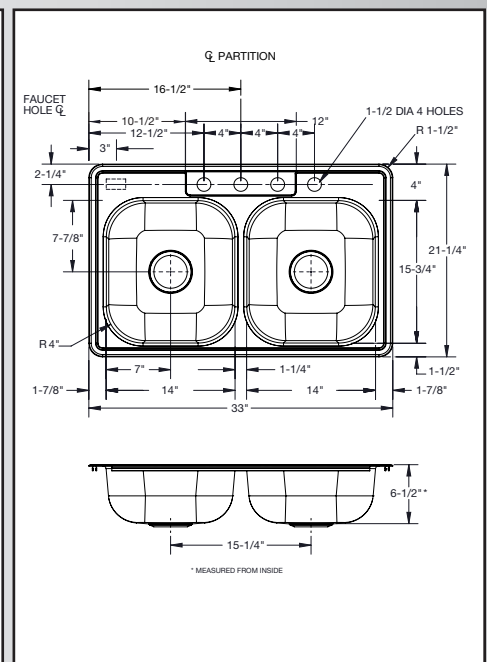
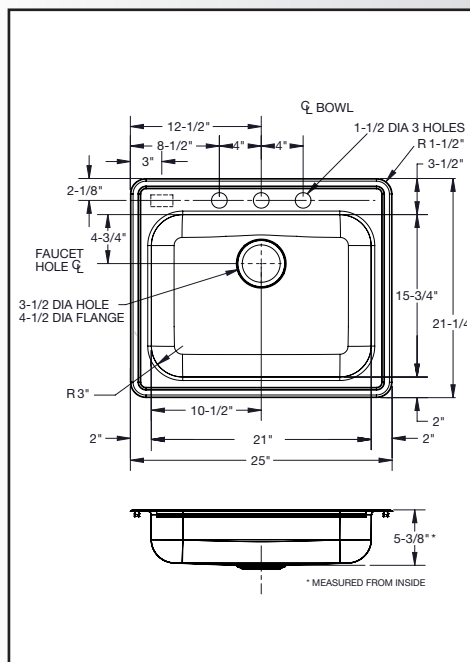
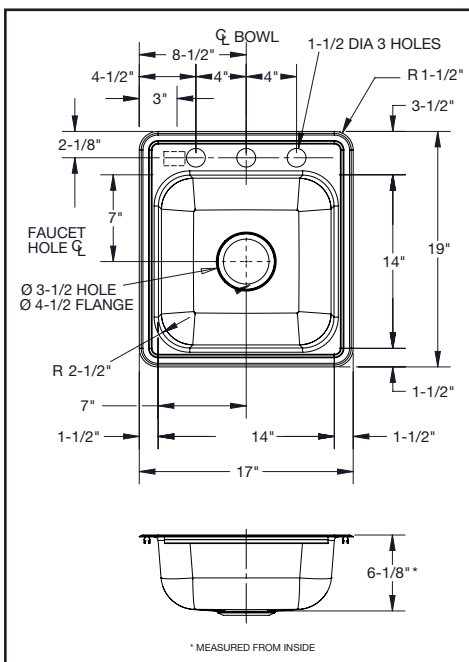
**PFT2521553R** - Right Hand Drain 3-hole, 22-gauge, 5-1/2" (140mm)

- Stainless single bowl sink
- Self-rimming
- Sink clips included
- Available with 3 faucet holes
- 22 gauge
- Overall size 25" x 21-1/4"
- Bowl size 21" x 15-3/4"
- Bowl depth 5-3/8"
- Drain diameter 3-1/2"

**PFT3321653** - 3-hole, 22-gauge, 6.5" (152mm)

**PFT3321654** - 4-hole, 22-gauge, 6.5" (152mm)

- Stainless double bowl sink
- Self-rimming
- Sink clips included
- Available with 3 or 4 faucet holes
- 22 gauge
- Overall size 33" x 21-1/4"
- Bowl size 14" x 15-3/4"
- Bowl depth 6-1/2"
- Drain diameter 3-1/2"



Dimensions may vary (+) or (-) 1/4". Numbers in () are mm.

# Stainless Steel Sinks



**PFT151561** - 1-hole

**PFT151562** - 2-hole

- Self-rimming stainless steel bar sink
- Sink clips included
- Overall size 15" x 15" (381mm x 381mm)
- Bowl size 12-1/4" x 10-1/2" (311mm x 267mm)
- Bowl depth 6" (152mm)
- Drain diameter 3-1/2" (89mm)
- Two-year limited warranty
- Sound absorption pads and coating to minimize vibration and sound and increase durability
- Basket strainer sold separately



**PFT252263** - 3-hole, 22-gauge, 6" (152mm)

**PFT252264** - 4-hole, 22-gauge, 6" (152mm)

**PFT252263BP** - 3-hole, 23-gauge, 6" (152mm), 50 pack

**PFT252264BP** - 4-hole, 23-gauge, 6" (152mm), 50 pack

**PFT2522653** - 3-hole, 22-gauge, 6.5" (152mm)

**PFT2522654** - 4-hole, 22-gauge, 6.5" (152mm)

**PFT252273** - 3-hole, 20-gauge, 7" (177mm)

**PFT252274** - 4-hole, 20-gauge, 7" (177mm)

**PFT252283** - 3-hole, 20-gauge, 8" (208mm)

**PFT252284** - 4-hole, 20-gauge, 8" (208mm)

- Self-rimming stainless steel single-bowl sink
- Sink clips included
- Overall size 25" x 22" (635mm x 559mm)
- Bowl size 21-1/4" x 15-1/2" (540mm x 394mm)
- Drain diameter 3-1/2" (89mm)
- Two-year limited warranty
- Sound absorption pads and coating to minimize vibration and sound and increase durability
- Basket strainer sold separately



**PFT332263** - 3-hole, 22-gauge, 6" (152mm)

**PFT332264** - 4-hole, 22-gauge, 6" (152mm)

**PFT332263BP** - 3-hole, 23-gauge, 6" (152mm), 50 pack

**PFT332264BP** - 4-hole, 23-gauge, 6" (152mm), 50 pack

**PFT3322653** - 3-hole, 22-gauge, 6.5" (152mm)

**PFT3322654** - 4-hole, 22-gauge, 6.5" (152mm)

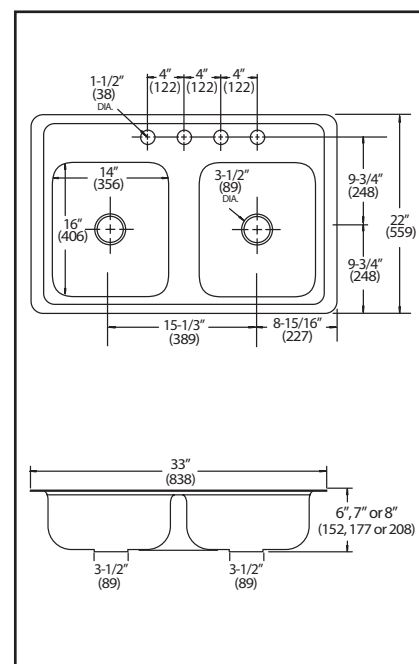
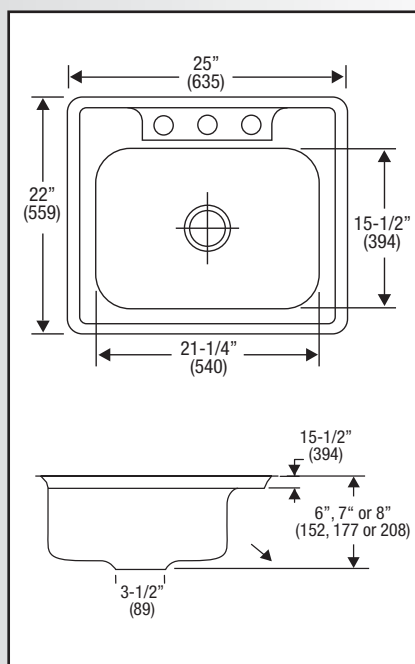
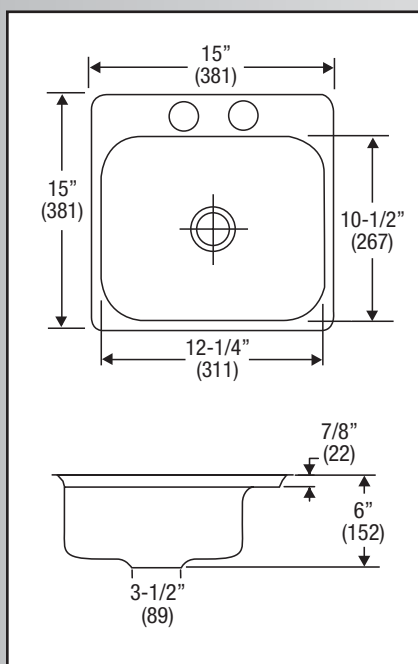
**PFT332273** - 3-hole, 20-gauge, 7" (177mm)

**PFT332274** - 4-hole, 20-gauge, 7" (177mm)

**PFT332283** - 3-hole, 20-gauge, 8" (208mm)

**PFT332284** - 4-hole, 20-gauge, 8" (208mm)

- Self-rimming stainless steel double-bowl sink
- Sink clips included
- Overall size 33" x 22" (838mm x 559mm)
- Bowl size 14" x 16" (356mm x 406mm)
- Drain diameter 3-1/2" (88.9mm)
- Two-year limited warranty
- Sound absorption pads and coating to minimize vibration and sound and increase durability
- Basket strainers sold separately



# Bath and Shower Accessories

Dimensions may vary (+) or (-) 1/4". Numbers in () are mm.



- PF14BSBN** - brushed nickel  
**PF14BSCP** - chrome
- Slide bar with 7/8" (22.2mm) brass bar
  - 22-1/2" (572mm) slide bar for adjustable handshower (handshower not included)
  - Handshower slides up and down bar to customize spray height
  - Use with handshower kits **PF14510**, **PF14310**, **PF14110**
  - Screws and anchors included
  - ADA compliant\*



- PF14510CP** - chrome plated  
**PF14510BN** - brushed nickel
- Adjustable spray hand-held shower
  - Five functions - drenching combination massage, heavy and light sprays
  - Flexclean™ eliminates clogging and corrosion
  - Includes handshower mounting hardware, 60" (1524mm) Meraflex II™ hose
  - 2.5 gpm
  - ADA compliant\*



- PF14110WH** - white
- Heavy spray hand-held shower
  - Flexclean™ eliminates clogging and corrosion
  - Includes handshower mounting hardware, 60" (1524mm) vinyl hose
  - 2.5 gpm
  - ADA compliant\*



- PF14310CP** - chrome plated
- Adjustable spray hand-held shower
  - Three functions - massage, heavy and light sprays
  - Flexclean™ eliminates clogging and corrosion
  - Includes handshower mounting hardware, 60" (1524mm) Meraflex II™ hose
  - 2.5 gpm
  - ADA compliant\*



- 1-3/4" (38mm) stainless steel grab bar
- 18-gauge 304 stainless steel bar
- 14-gauge 304 stainless steel flange
- #10 x 2" (50.8mm) self-tapping stainless steel screws
- Must be attached to wall stud
- ADA compliant\*



- PFSCR60** - 5ft. (1524mm) - chrome  
**PFSCR72** - 6ft. (1829mm) - chrome  
**PFSRFCP** - flange kit
- Straight shower rod
  - Made of aluminum
  - Shower rod flange kit sold separately

Satin Finish	Peened Finish	Length
PFGB12SF	PFGB12PF	12" (304.8mm)
PFGB16SF	PFGB16PF	16" (406.4mm)
PFGB18SF	PFGB18PF	18" (457.2mm)
PFGB24SF	PFGB24PF	24" (609.6mm)
PFGB30SF	PFGB30PF	30" (762mm)
PFGB32SF	PFGB32PF	32" (812.8mm)
PFGB36SF	PFGB36PF	36" (914.4mm)
PFGB42SF	PFGB42PF	42" (1066.8mm)
PFGB48SF	PFGB48PF	48" (1219.2mm)



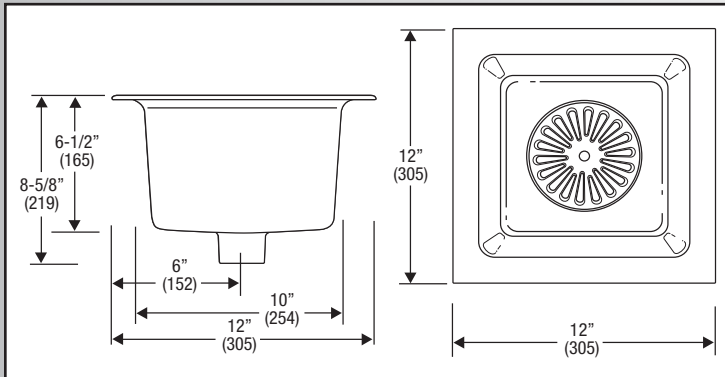
- PFCSR60CP** - chrome plated  
**PFCSR60BN** - brushed nickel
- Curved shower rod fits 5 ft. (1524mm) shower
  - Made of 22-gauge 304 stainless steel
  - Flange kit included: hardware included for installation into sheetrock, tile and wood
  - Adds 6" (153mm) elbow room (25% more shower area)
  - Fits all standard shower curtains





Dimensions may vary (+) or (-) 1/4".  
Numbers in () are mm.

## ***Floor and Laundry Sinks and Accessories***



**PF906K - 12"X12" (305mm x 305mm)**

2" (50.8mm) NH connection

**PF906M - 12"X12" (305mm x 305mm)**

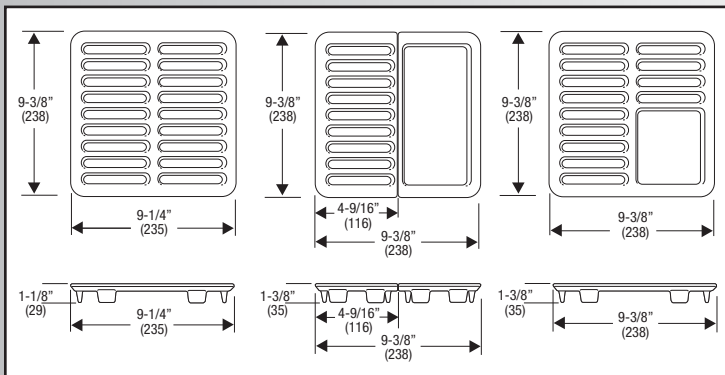
3" (76.2mm) NH connection

**PF906P - 12"X12" (305mm x 305mm)**

4" (101.6mm) NH connection

**PFADS - Aluminum Dome Strainer**

- White cast iron floor sink



**PF910** - Full top grate

**PF912** - Half top grate

**PF934** – Three-quarter top grate

**PF912S** - Split half top grate

- White porcelain top grate



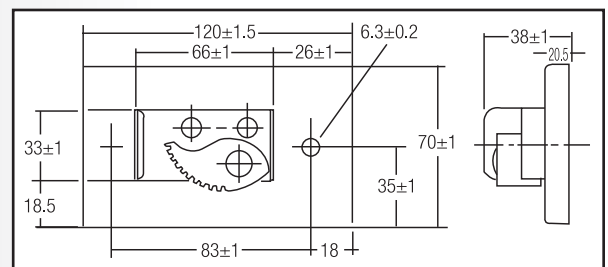
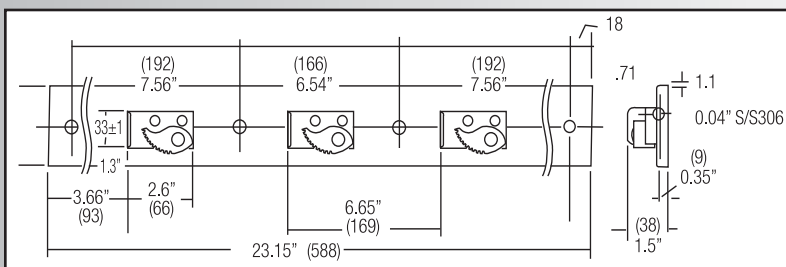
## PF245

- Mop hanger for service sink



## PF296

- Single hose bracket for service sink
- For use with service sink hose **PFSSHE** (see pg. 23)



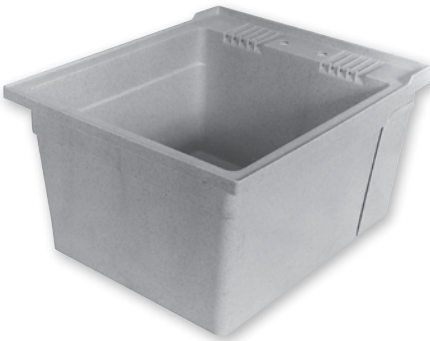
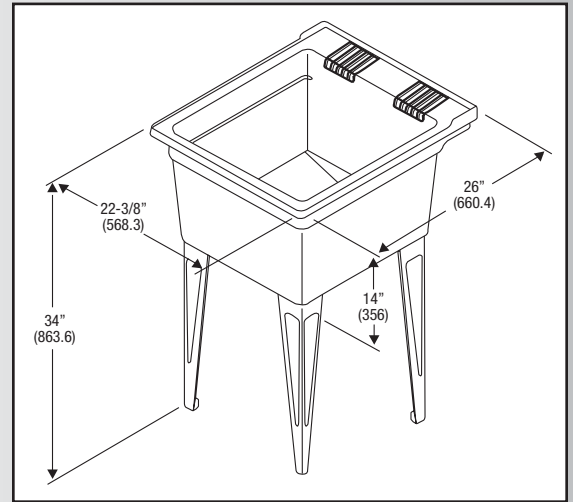
# Floor and Laundry Sinks and Accessories

Dimensions may vary (+) or (-) 1/4".  
Numbers in ( ) are mm.



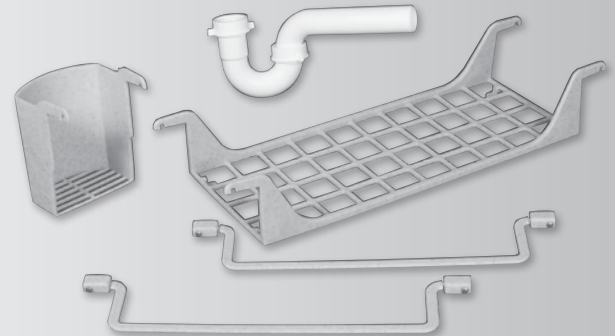
## PFMS2620F

- Single-compartment, multi-purpose sink
- Floor mount
- Molded polyethylene with seamless corners and edges
- Non-corrosive adjustable legs
- 22-3/8" x 26" x 34"  
(568.3mm x 660.4mm x 863.6mm)
- Available in granite gray
- Drain assembly included
- 4" (101.6mm) centers



## PFMS2620W

- Single-compartment, multi-purpose sink
- Wall-mount
- Molded polyethylene with seamless corners and edges
- 22-3/8" x 26" x 14"  
(568.3mm x 660.4mm x 355.6mm)
- Drain assembly included
- 4" (101.6mm) centers



## PFJP2620AP - for single basin

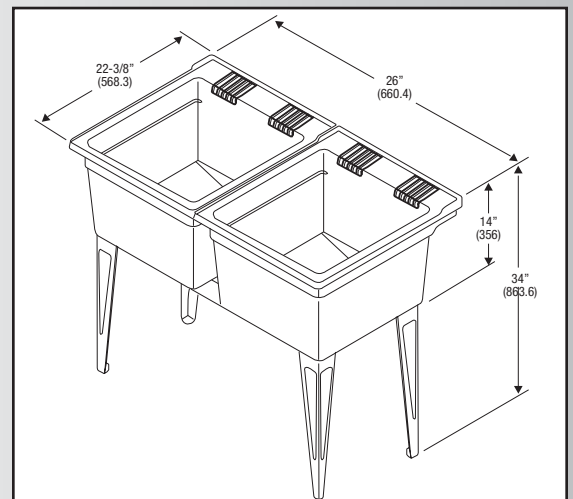
## PFJP2623APD - for double basin

- Accessory package
- Drying rack, two towel bars, bottle holder and p-trap kit
- Available in appliance white or granite gray
- Drain assembly included



## PFMS2623F

- Double-compartment, multi-purpose sink
- Floor mount
- Molded heavy-duty polyethylene with seamless corners and edges
- Non-corrosive adjustable legs
- Integral cross bow drain
- 44-3/4" x 28" x 34"  
(1136.6mm x 711.2mm x 863.6mm)
- Drain assembly included
- 4" (101.6mm) centers

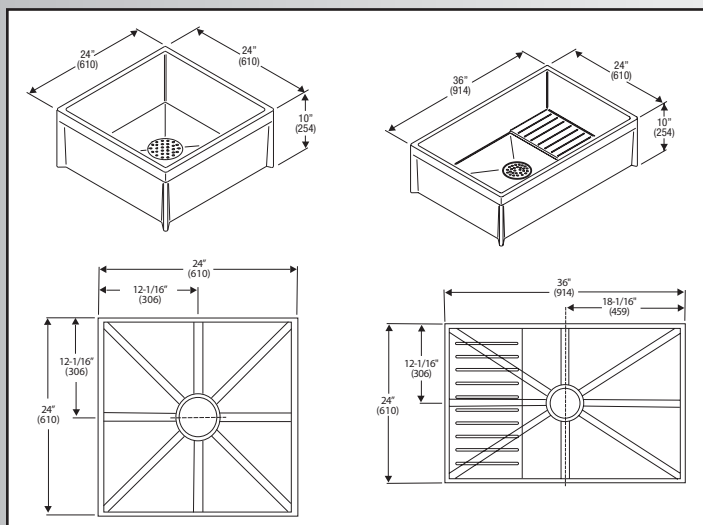
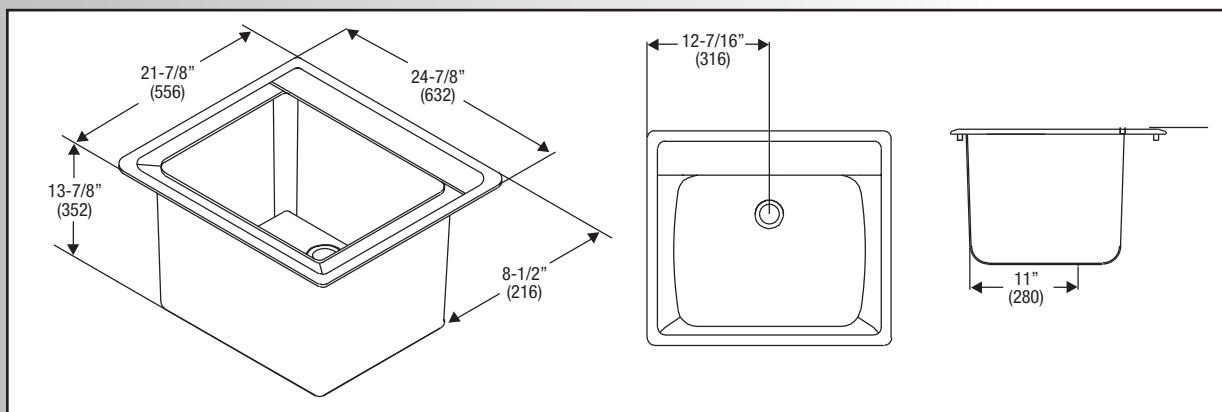


Dimensions may vary (+) or (-) 1/4".  
Numbers in () are mm.

# Floor and Laundry Sinks and Accessories

## PFMS2624

- Self-rimming design
- Compression molded (SMC) high impact fiberglass/crushed stone
- Will accommodate 4cc or 8cc with soap dispenser and hose spray
- 17-gallon (64-liter) water capacity
- Available in white
- 24-7/8" x 21-7/8" x 13-7/8" (632mm x 556mm x 352mm)
- Drain assembly included



## Available Accessories

- PFJP260024BS** - 24" (610mm) stainless steel bumper guard set
- PFJP260036BS** - 36" (914mm) stainless steel bumper guard set
- PFJP260024BV** - 24" (610mm) vinyl bumper guard set
- PFJP260036BV** - 36" (914mm) vinyl bumper guard set
- PFJP2600WG24** - 24" (610mm) stainless steel wall guard set
- PFJP2600WG36** - 36" (914mm) stainless steel wall guard set



**PFZ199624** - 24" x 24" x 10" (610mm x 610mm x 254mm)

**PFZ199636** - 36" x 24" x 10" (914mm x 610mm x 254mm)

- Mop basin molded of high density composite
- PVC drain body and stainless steel dome strainer/lint basket
- 36" (914mm) model includes integrally-molded, self-draining mop shelf

**PFZ199624SDWH** - 24" x 24" x 10" (610mm x 610mm x 254mm)

- Stainless Steel drain body with no-hub connection
- Available in white (WH) only

# Heavy Duty Commercial Faucets

Dimensions may vary (+) or (-) 1/4".  
Numbers in ( ) are mm.

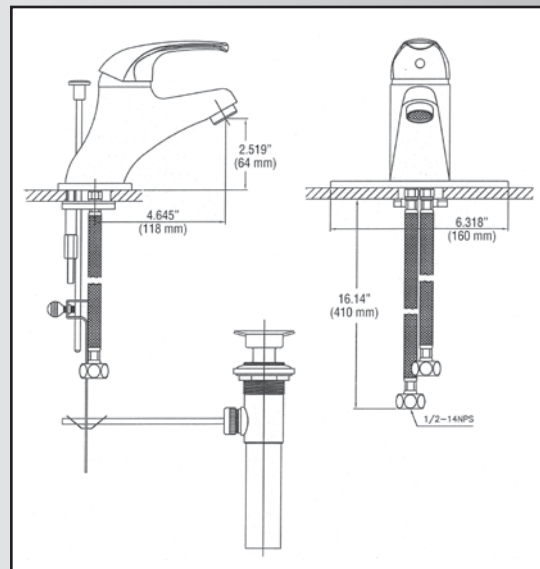


**LOW  
LEAD  
COMPLIANT**

## **PFX100** - (with pop-up) **PFX101** - (without pop-up)

- One piece cast brass body
- Ceramic cartridge with temperature limiting device
- 1.5 GPM water saving aerator
- Less pop-up
- Durable chrome finish
- Factory tested

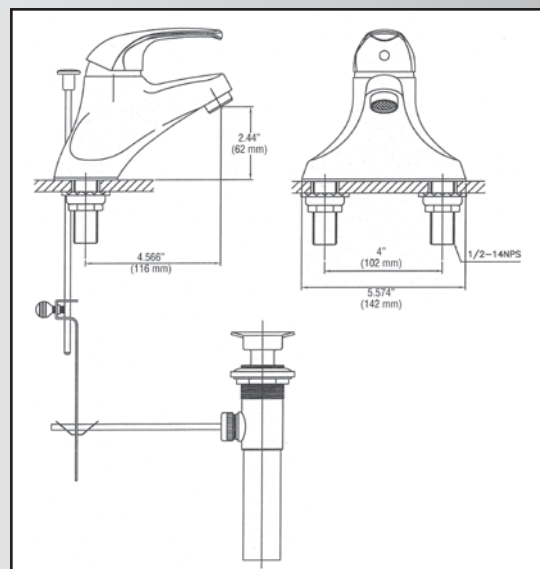
PFX100 available in chrome (CP) and brushed nickel (BN)  
PFX101 available in chrome (CP) only  
Replacement cartridge available PFCF104CRT.



## **PFCF104** - (with pop-up) **PFCF104L** - (without pop-up)

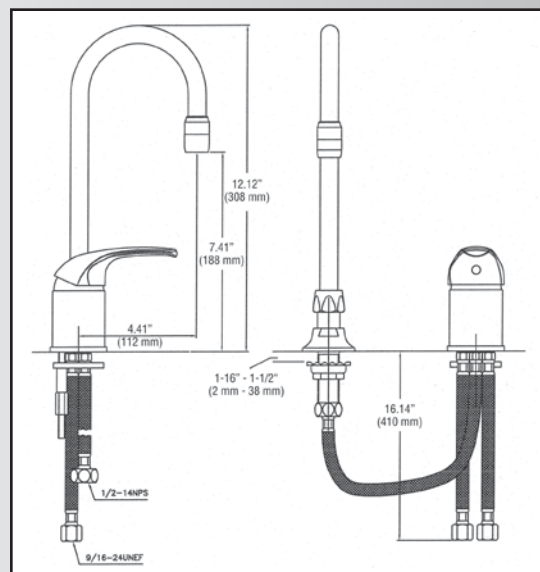
- One piece cast brass body
- Ceramic cartridge with temperature limiting device
- 1.5 GPM water saving aerator
- Metal pop-up
- Durable chrome finish
- Factory tested
- Available in chrome (CP) only

Replacement cartridge available PFCF104CRT.



## **PFCF110** - without pop-up

- Gooseneck spout
- Ceramic cartridge
- Flexible stainless steel supplies
- Factory tested
- Available in chrome (CP) only



Dimensions may vary (+) or (-) 1/4". Numbers in () are mm.

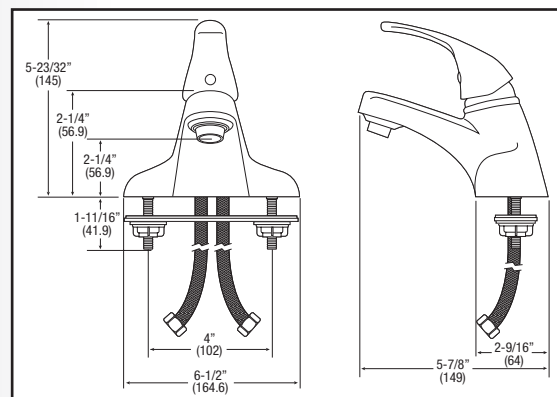
# Lavatory Faucets



## PFWS4013M



- Single-handle lavatory faucet w/ metal pop-up
- Ceramic disc cartridge
- 4" (102mm) centerset
- Solid brass waterways
- Polished chrome finish
- 2.0 gpm / 7.6 Lpm water-saving aerator
- 20" (508mm) stainless steel braided hose supply lines
- ADA compliant\* lever handle
- NSF/ANSI Std. 61 compliant
- cUPC approved
- Available in BN



## PFL1001M less pop-up PFWS1001M PFL1011M PFWS1011M

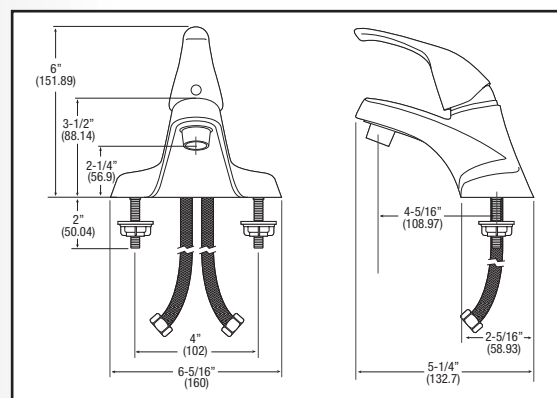
1/2" (12.7mm) MPT connection

## PFL1011WFM PFWS1011WFM

20" (508mm) stainless steel braided hose

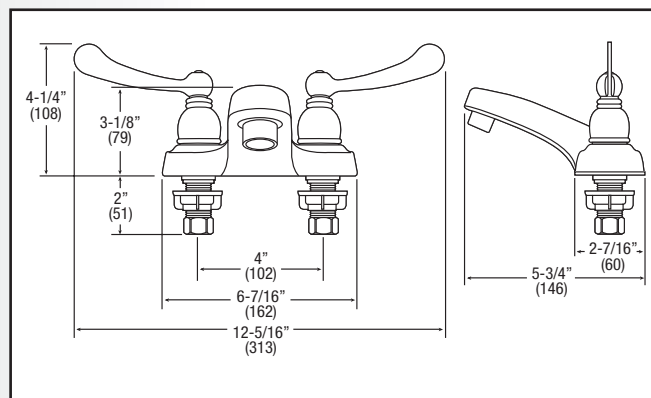


- Single-handle lavatory faucet w/ metal pop-up; washerless design
- 4" (102mm) centerset; copper waterways with metal housing
- Washerless design with brass ball
- Polished chrome finish
- 2.0 gpm / 7.6 Lpm aerator
- ADA compliant\* lever handle
- NSF/ANSI Std. 61 compliant
- cUPC approved



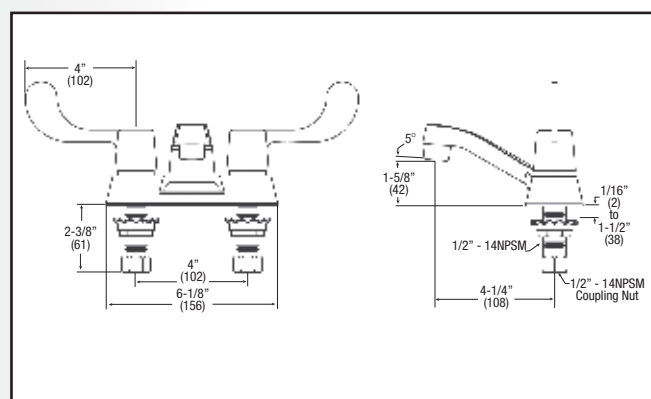
## PFL1012M with grid drain PFWS1012M PFL1002M less drain PFWS1002M

- Two-handle lavatory faucet; washerless design
- 4" (102mm) centerset
- Solid brass waterways with metal housing
- Polished chrome finish
- 2.0 gpm / 7.6 Lpm water saving aerator
- 1/2" (12.7mm) MPT connections
- ADA compliant\* lever handle
- NSF/ANSI Std. 61 compliant
- cUPC approved



## PFCF204 PFCF204

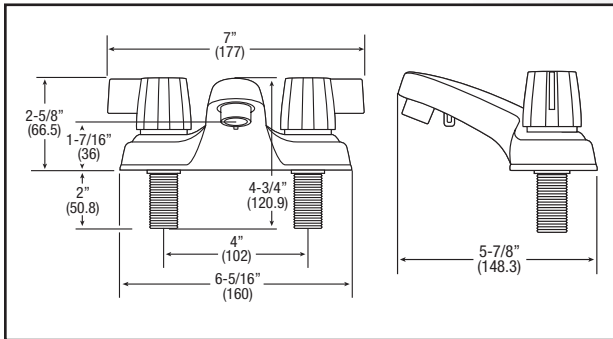
- Heavy-duty, two-handle lavatory faucet
- 4" (102mm) centerset, cast brass
- Ceramic cartridge with brass stems
- Polished chrome finish
- 2.0 gpm / 7.6 Lpm aerator
- Vandal-resistant screws and color-indexed caps
- ADA compliant\* wrist blade handles
- Optional vandal resistant aerator PFCFVRMAER





# Lavatory Faucets

Dimensions may vary (+) or (-) 1/4". Numbers in () are mm.



**PFLL1002ML**

less pop-up

**PFLL1012ML**

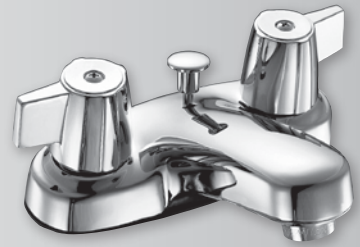
with metal pop-up

- Two-handle lavatory faucet
- 4" (102mm) centerset; durable chrome finish
- Washerless design and solid brass waterways with metal housing
- 2.0 gpm / 7.6 Lpm water saving aerator
- ADA compliant\* metal blade handles
- NSF/ANSI Std. 61 compliant
- cUPC approved



**PFWS1002ML**

**PFWS1012ML**



# Bar Faucets



**PFCFB204**

- Heavy-duty, two-handle bar faucet
- 4" (102mm) centerset, cast brass
- Swivel gooseneck spout
- Ceramic cartridge with brass stems
- Polished chrome finish
- 2.0 gpm / 7.6 Lpm aerator
- Vandal-resistant screws and color-indexed caps
- ADA compliant\* wrist blade handles
- Optional vandal resistant aerator **PFCFVRAER**

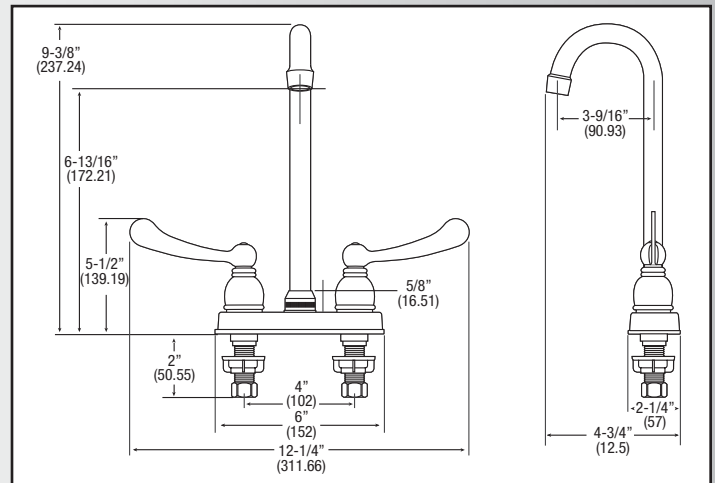
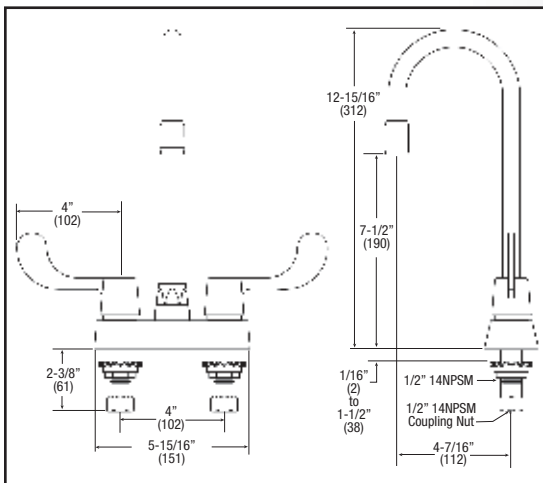


**PFXCFB204**



**PFWS336M**

- Two-handle bar faucet
- Washerless design
- Solid brass waterways
- Polished chrome finish
- 4" (102mm) centerset
- 9 3/8" (238mm) spout
- 2.0 gpm / 7.6 Lpm water saving aerator
- 1/2" (12.7mm) MPT connections
- ADA compliant\* metal wing handles
- cUPC approved



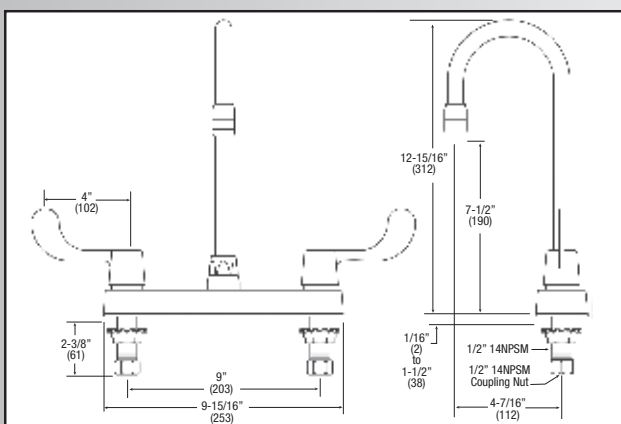
Dimensions may vary (+) or (-) 1/4". Numbers in () are mm.

# Kitchen Faucets



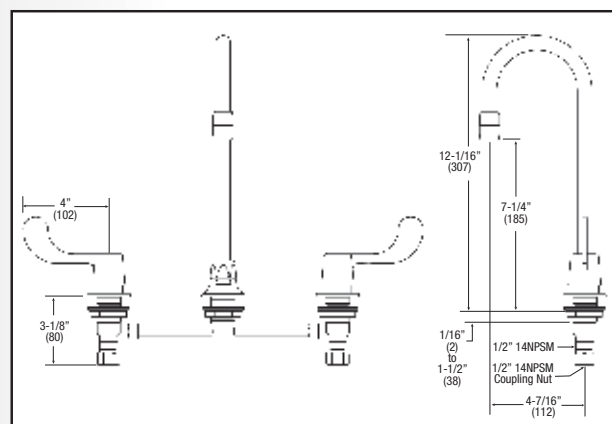
## PFCF208 8" spout PFCF208

- Heavy-duty, two-handle faucet
- 8" (203mm) centerset, cast brass
- Swivel gooseneck spout
- Ceramic cartridge with brass stems
- Polished chrome finish
- 2.0 gpm / 7.6 Lpm aerator
- Vandal-resistant screws and color-indexed caps
- ADA compliant\* wrist blade handles
- Optional vandal resistant aerator PFCFVRAER
- cUPC approved



## PFCFU208 4" spout PFCFU208

- Heavy-duty, two-handle faucet
- 6 - 12" (152.4 - 304.8mm) undermount, cast brass
- Swivel gooseneck spout
- Ceramic cartridge with brass stems
- Polished chrome finish
- 2.0 gpm (7.6 Lpm) aerator
- Vandal-resistant screws and color-indexed caps
- ADA compliant\* wrist blade handles
- Optional vandal resistant aerator PFCFVRAER
- cUPC approved



## PFX2001M - without spray, 1/2" (12.7mm) MPT connection

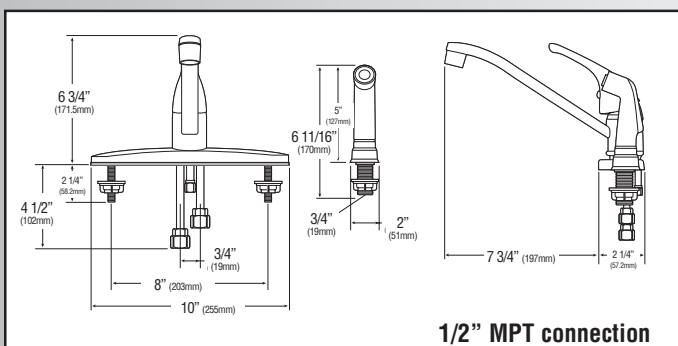
## PFX2011M - with spray, 1/2" (12.7mm) MPT connection

- Single-handle kitchen faucet
- Washerless design
- 8" (203mm) centerset
- Polished chrome finish
- 2.0 gpm / 7.6 Lpm water saving aerator
- ADA compliant\* metal lever handle
- NSF/ANSI Std. 61 compliant
- cUPC approved

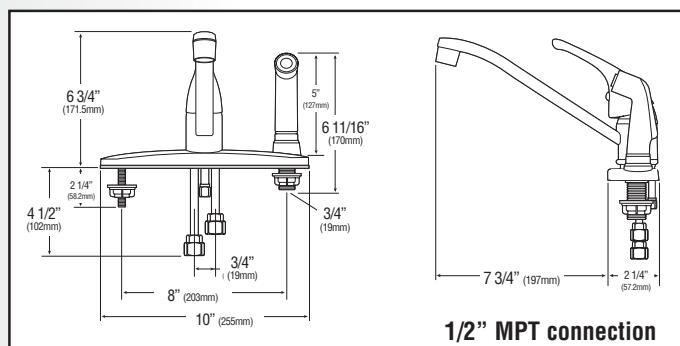


## PFX2021M

- Single-handle kitchen faucet
- With spray on deck; 8" (203mm) centerset
- Washerless design; copper waterways
- Polished chrome finish
- 2.0 gpm / 7.6 Lpm water saving aerator
- 1/2" (12.7mm) MPT connections
- ADA compliant\* metal lever handle
- NSF/ANSI Std. 61 compliant
- cUPC approved



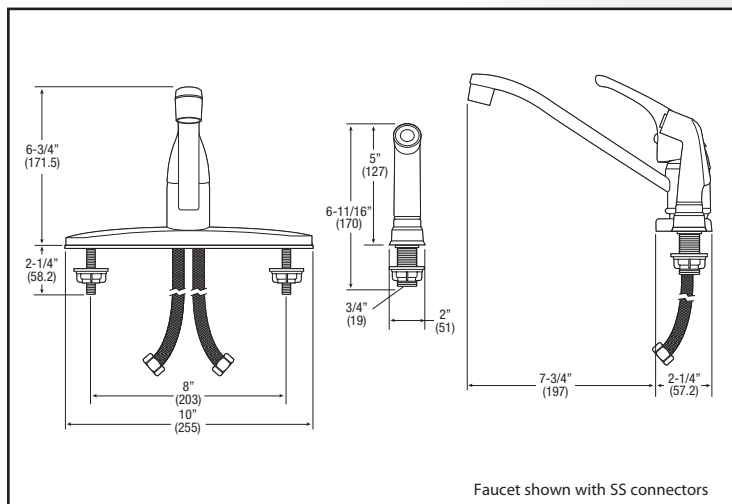
1/2" MPT connection



1/2" MPT connection

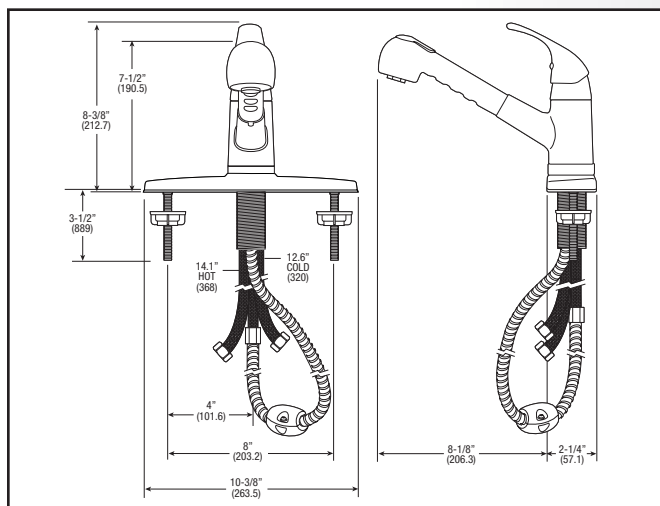
# Kitchen Faucets

Dimensions may vary (+) or (-) 1/4". Numbers in () are mm.



**PFX4001M** - without spray, 20" (508mm) stainless steel connectors  
**PFX4011M** - with spray, 20" (508mm) stainless steel connectors

- Single-handle kitchen faucet
- Ceramic disc cartridge
- 8" (203mm) centerset
- Polished chrome finish
- 2.0 gpm / 7.6 Lpm water saving aerator
- ADA compliant\* metal lever handle
- CSA approved
- NSF/ANSI Std. 61 compliant



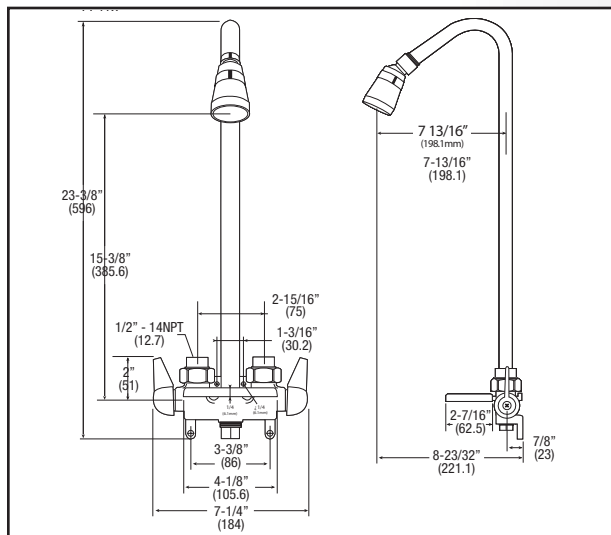
**PFL5011CP**

**PFX5011MCP**

- Chrome single-handle kitchen faucet w/ pull-out spray
- Internal vacuum breaker construction
- Ceramic disc cartridge
- Polished chrome finish
- Solid brass construction
- Braided stainless steel connectors
- 2.2 gpm / 8.3 Lpm water-saving aerator
- ADA compliant\* lever handle
- CSA approved
- NSF/ANSI Std. 61 compliant
- Available in BN

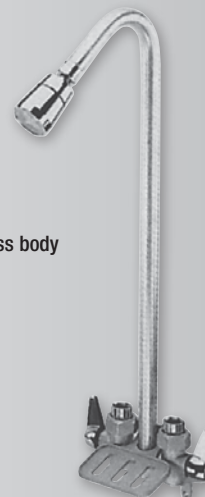


# Service Faucets



**PF418**

- Rough brass body
- 3-3/8" (86mm) centerset; combination union inlet 1/2" (12.7mm) threaded or solder
- Polished chrome finish
- Solid brass waterways; renewable seats and stems; CP brass body
- ADA compliant\* lever handles



Dimensions may vary (+) or (-) 1/4". Numbers in () are mm.

# Service Faucets

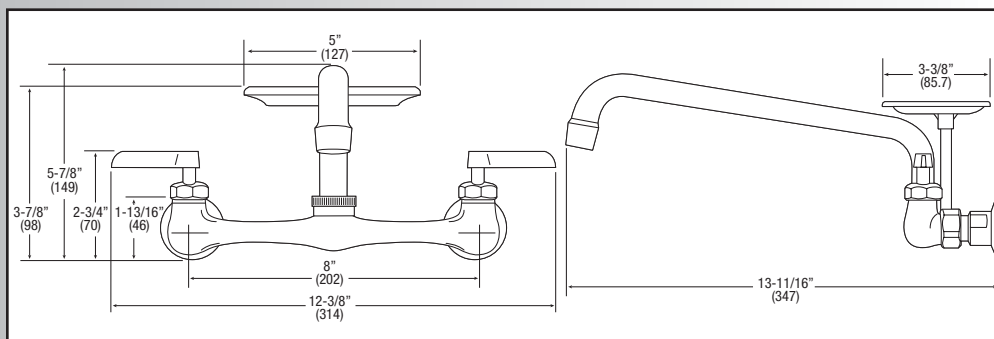
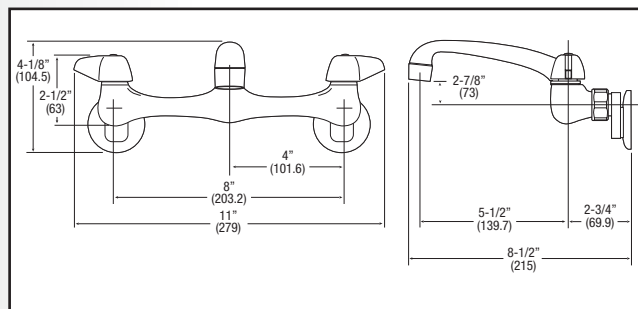


## PF800

- Swing spout
- Adjustable center 7" to 9" (178 to 229mm), solid brass waterways; renewable seats and stems
- Polished chrome finish
- 6" (152mm) cast brass spout w/ water-saving aerator
- ADA compliant\* lever handles



PFX800



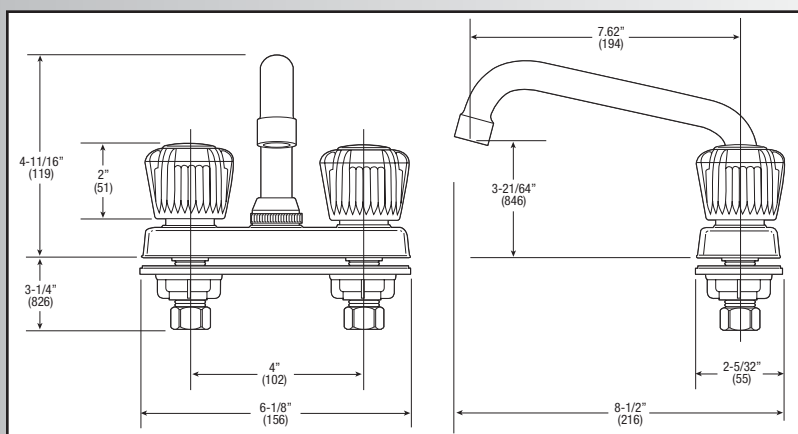
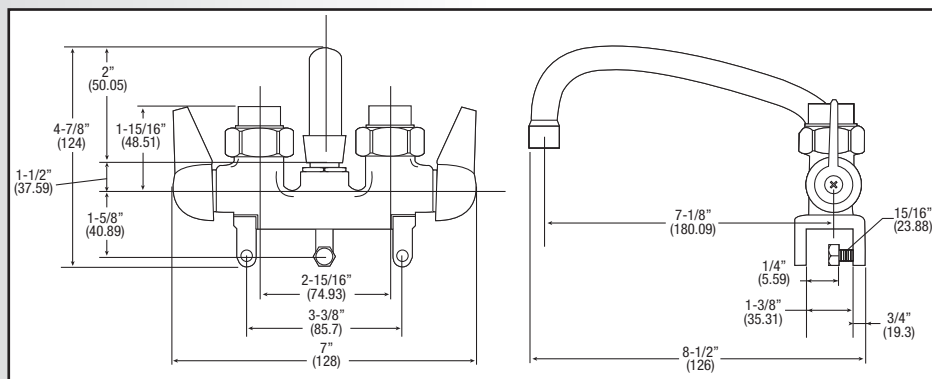
**PF80012** 12" (304.8mm) spout **PF80012**  
**PF800U** 6" (152.4mm) spout **PF800U**

- 8" (203.2mm) centers
- Polished chrome finish
- Cast brass spout; water-saving aerator
- Soap dish
- ADA compliant\* lever handles



## PF244

- Laundry faucet
- Rough brass body w/ 3-3/8" (85.7mm) centers
- Clamp-type mounting; solid brass body and waterways; renewable seats and stems
- Polished chrome handles
- ADA compliant\* lever handles



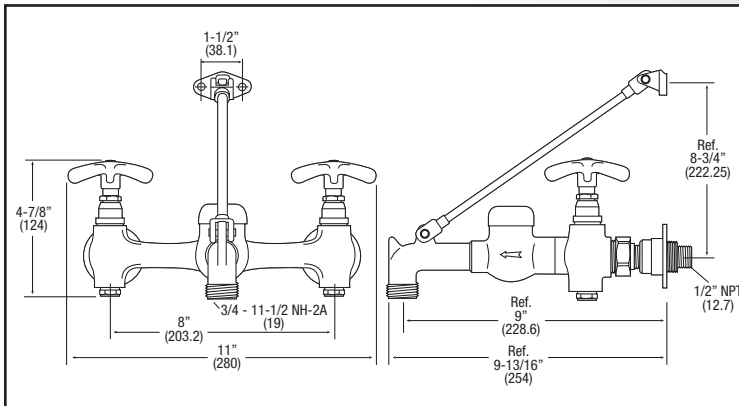
**PFX7002A** - acrylic handles  
**PFX7002M** - metal lever handles

- 4" (102mm) centerset
- 8" (203.2mm) spout with washerless design
- Aerator or hose thread connection
- Polished chrome finish
- NSF/ANSI Std. 61 compliant
- cUPC approved



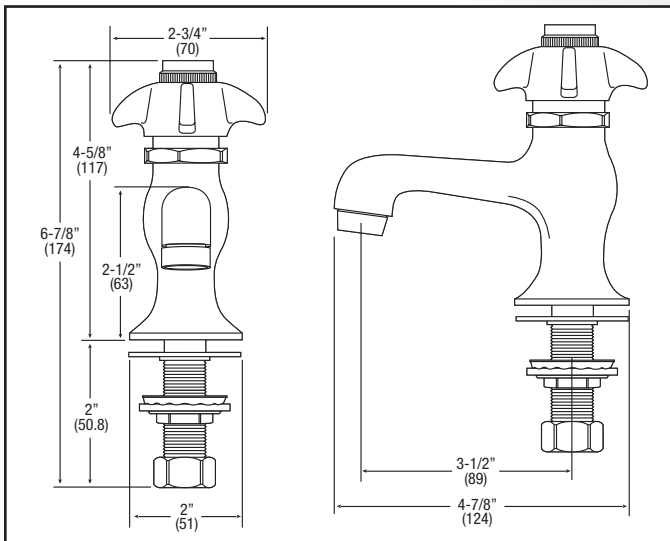
# Service Faucets

Dimensions may vary (+) or (-) 1/4". Numbers in () are mm.



## PF1118

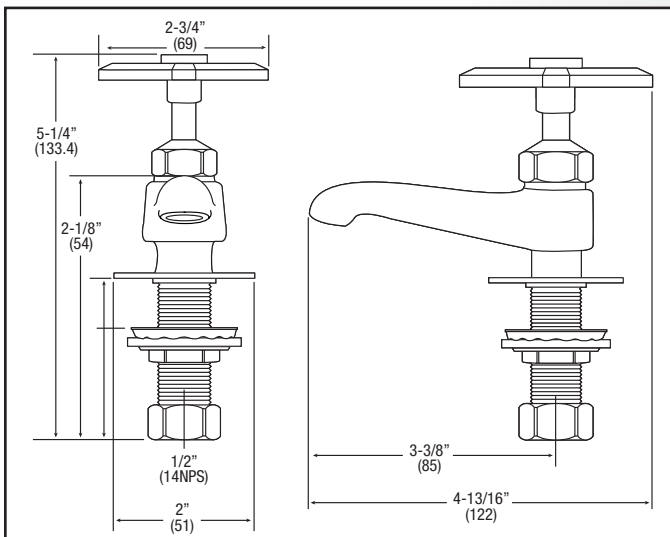
- 3/4" (19mm) hose thread on spout
- With wall base, vacuum breaker, integral stops
- Solid brass waterways; renewable seats and stems
- Chrome finish
- CUPC / ASSE approval



## PF750

- Chrome-plated brass finish
- Heavy duty
- Self-closing basin
- Solid brass waterways; renewable seats and stems

**LOW  
LEAD  
COMPLIANT**  
PFX750



## PF300

- Chrome-plated brass finish
- Includes hot and cold index buttons
- 1/2" (12.7mm) single base
- Solid brass waterways; renewable seats and stems





Dimensions may vary (+) or (-) 1/4". Numbers in () are mm.

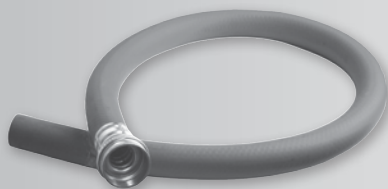
## Access Doors



- PF88SSAD** - 8" x 8" (203.2mm x 203.2mm) stainless steel universal access door  
**PF1010SSAD** - 10" x 10" (254mm x 254mm) stainless steel universal access door  
**PF1212SSAD** - 12" x 12" (304.8mm x 304.8mm) stainless steel universal access door  
**PF88AD** - 8" x 8" (203.2mm x 203.2mm) steel universal access door, white  
**PF1010AD** - 10" x 10" (254mm x 254mm) steel universal access door, white  
**PF1212AD** - 12" x 12" (304.8mm x 304.8mm) steel universal access door, white  
**PF1414AD** - 14" x 14" (355.6mm x 355.6mm) steel universal access door, white  
**PF1616AD** - 16" x 16" (406.4mm x 406.4mm) steel universal access door, white  
**PF1818AD** - 18" x 18" (457.2mm x 457.2mm) steel universal access door, white  
**PF2424AD** - 24" x 24" (609.6mm x 609.6mm) steel universal access door, white

- One-piece construction
- Concealed pivoting rod hinge
- 16-gauge stainless steel or prime-coat finished steel

## Sink and Drain Accessories



### PFSSHE

- Service sink hose
- 5/8" x 30" (15.9mm x 762mm)
- 3/4" (19mm) hose thread connection



**PF8089** - 1-1/2" x 1-1/2" (38.1mm x 38.1mm)  
Includes 1-1/4" x 1-1/2" (31.8mm x 38.1mm) washer

**PF8089CNC** - 1-1/2" x 1-1/2"  
(38.1mm x 38.1mm) w/o cleanout

**PF8090** - 1-1/4" x 1-1/2" (31.8mm x 38.1mm)  
**PF8090CNC** - 1-1/4" x 1-1/2" (31.8mm x 38.1mm)  
w/o cleanout

- Chrome-plated finish
- Cast brass
- Ground joint swivel
- Solid brass nuts with clean out
- 17-gauge



**PF8872** - 1-1/2" x 1-1/4" (38.1mm x 31.8mm)

**PF8902** - 1-1/4" x 1-1/2" (31.8mm x 38.1mm)

**PF8912** - 1-1/4" x 1-1/4" (31.8mm x 31.8mm)

- Polished chrome cast brass
- 17-gauge wall bend and deep escutcheon
- Solid brass nuts w/cleanout



### PF1151AWC

- 1-1/2" (38.1mm) offset tail piece for sink
- 17-gauge
- Heavy duty



### PF151CP

- Chrome-plated finish
- 3-1/2" (88.9mm) premium basket strainer
- Forged heavy brass body



### PFWTS

- Stainless steel
- Flat top strainer
- Chrome-plated body
- Grid fits 3-1/2" (88.9mm) opening

# Sink and Drain Accessories

Dimensions may vary (+) or (-) 1/4". Numbers in () are mm.

**PF002** - 2" (50.8mm) IPS outlet

**PF003** - 3" (76.2mm) IPS outlet

- Cast Iron trap with chrome-plated strainer for service sinks



**PF155A**

- Heavy-duty grid drain
- 1-1/4" x 6" (31.8mm x 152.4mm) w/ overflow
- Chrome-plated finish
- Cast brass construction with 17-gauge tailpiece
- CUPC approval



**PFHGD**

- Heavy-duty wheelchair accessible lavatory elbow
- Chrome-plated finish
- Cast brass construction with 17-gauge tailpiece
- CUPC approval



**PF200WH**

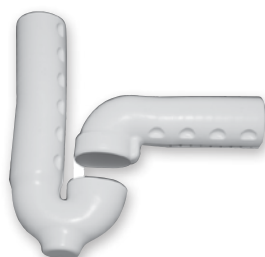
- One p-trap cover - molded

**PF299WH**

- One angle valve, one 12" (304.8mm) supply cover - molded

**PFEXT200WH**

- One 16" (406.4mm) extension for drain waste arm or tailpiece - molded



**PF201WH**

- One p-trap cover, one angle valve, one 12" (304.8mm) supply cover - molded

**PF202WH**

- White three-piece p-trap and supply covers - molded

**PF203WH**

- One p-trap cover, two angle valve covers, two 12" (304.8mm) supply covers, one 5" (127mm) offset tailpiece, wheelchair strainer cover

**PF205WH**

- Offset tailpiece cover, white - molded



**PFSCPTWH** - white

**PFSCPTBK** - black

- One p-trap cover- soft



**PFSCPT1SWH** - white

**PFSCPT1SBK** - black

- One p-trap cover, one valve and supply cover- soft



**PFSCPT2SOFFWH** - white

**PFSCPT2SOFFBK** - black

- One p-trap cover, two valve and supply covers, one 5" (127mm) offset tailpiece wheelchair strainer cover- soft



**PFSC1SWH** - white

**PFSC1SBK** - black

- One valve and supply cover- soft



**PFSCOFFWH** - white

**PFSCOFFBK** - black

- 5" (127mm) offset tailpiece wheelchair strainer cover- soft



**PFSCPT2SWH** - white

**PFSCPT2SBK** - black

- One p-trap cover, two valve and supply covers - soft

- Quick, easy installation with Velcro
- Universal design fits virtually all p-trap assemblies
- Over 360 degree flexibility
- Smooth, high-gloss finish with UV
- Optional reusable non-abrasive snap fasteners offer extra tamper resistance
- PVC insulation is Class A Fire Rated and meets ASTM E84 with a 25 flame and 450 smoke rating
- ADA, IBC, ICC/ANSI and Canada-Barrier Free compliant

Dimensions may vary (+) or (-) 1/4". Numbers in () are mm.

## Trap Primers and Accessories



### PFTRAPID

- 1/2" (12.7mm) IPS with auto vacuum breaker, bronze



### PFTRAPSD

- 1/2" (12.7mm) sweat with auto vacuum breaker, bronze



### PFPDUU

- 4 opening distribution unit without fitting, plastic body



### PFP1500

- 1/2" (12.7mm) auto trap primer valve
- Will prime 3 or 4 floor drains

### PFP2500

- 1/2" (12.7mm) auto trap primer valve
- Will prime 1 or 2 floor drains



### PF127033

- 1-1/4" (31.8mm) semi-cast brass tailpiece

### PF127044

- 1-1/2" (38.1mm) semi-cast brass tailpiece

## Lavatory Supply Kits



### LEAD FREE CODE

**PFCATT22CLKRL12** - 3/8" IPS X 3/8" IPS rigid kit loose key

N/A

**PFCAT22CL12** - 3/8" IPS X 3/8" OD flex kit round wheel

N/A

**PFCATT22CLKL12** - 3/8" IPS X 3/8" OD flex kit loose key

N/A

**PFCAC32CL12** - 5/8" OD X 3/8" OD flex kit round wheel

N/A

**PFCAC32CLKL12** - 5/8" OD COMP X 3/8" OD flex kit loose key

**PFXCAC32CLKL12**

N/A

**PFCAS32CL12** - 1/2" SWT X 3/8" OD flex kit round wheel

N/A

**PFCAS32CLKL12** - 1/2" SWT X 3/8" OD flex kit loose key

N/A

**PFCAZ32CL12** - 1/2" SWT W/EXT 3/8" OD flex kit round wheel

N/A

**PFCAZ32CLKL12** - 1/2" SWT W/EXT 3/8" OD flex kit loose key

N/A

**PFCAT32CL12** - 1/2" IPS X 3/8" OD flex kit round wheel

N/A

**PFCAT32CLKL12** - 1/2" IPS X 3/8" OD flex kit loose key

N/A

**PFCAT33CL12** - 1/2" IPS X 1/2" OD flex kit round wheel

N/A

- Includes flexible chrome-plated copper risers with chrome-plated steel deep flanges and chrome-plated stops

- Stops are solid brass construction with round wheel handle or loose key as noted

- NSF/ANSI Std. 61 compliant

- Available only in pairs

- CSA approved

## Closet Supply Kits

Dimensions may vary (+) or (-) 1/4". Numbers in () are mm.

**PFCAT22CC12** - 3/8" IPS X 3/8" OD flex closet supply kit round wheel

**PFCAT22CLK12** - 3/8" IPS X 3/8" OD flex closet supply kit loose key

**PFCAC32CC12** - 5/8" OD X 3/8" OD flex closet supply kit round wheel

**PFCAC32CLK12** - 5/8" OD X 3/8" OD flex closet supply kit loose key

**PFCAS32CC12** - 1/2" SWT X 3/8" OD flex closet supply kit round wheel

**PFCAS32CLK12** - 1/2" SWT X 3/8" OD flex closet supply kit loose key

**PFCAZ32CC12** - 1/2" SWT w/ EXT X 3/8" OD flex closet angle supply kit

- Includes flexible chrome-plated copper risers with chrome-plated steel deep flanges and chrome-plated stops
- Stops are solid brass construction with round wheel handle or loose key as noted
- NSF/ANSI Std. 61 compliant



## Heavy Pattern Supply Kits

**PFHATT22CLKL12** - 3/8" IPS X 3/8" OD comm flex lav supply kit loose key

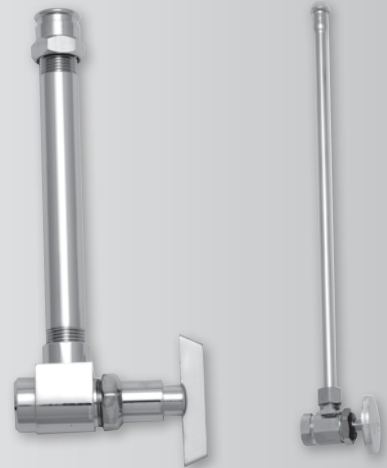
**PFHAT32CL12** - 1/2" IPS X 3/8" OD comm flex lav supply kit

**PFHAT32CLKL12** - 1/2" IPS X 3/8" OD comm flex lav supply kit loose key

**PFHAT33CLKL12** - 1/2" IPS X 1/2" OD comm flex lav supply kit loose key

- Lavatory kit includes flexible chrome-plated copper or rigid risers with chrome-plated steel deep flanges and chrome-plated stops
- Stops are solid brass construction with round wheel handle or loose key as noted
- NSF/ANSI Std. 61 compliant
- Available only in pairs

**PFHAT32CC12** - 1/2" IPS X 3/8" OD flex closet supply kit round wheel



## ADA Lavatory Supply Kit

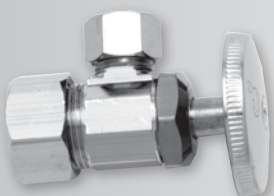
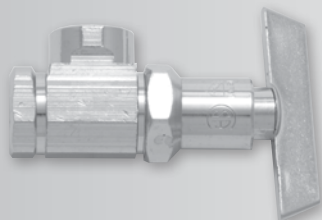
**PFCSTT22CLKWHL6** - 3/8" IPS X 3/8" IPS wheelchair kit loose key

- Stops are solid brass construction with round wheel handle or loose key as noted
- NSF/ANSI Std. 61 compliant



Dimensions may vary (+) or (-) 1/4". Numbers in () are mm.

## Individual Stops



- PFCATT22CLK** - 3/8" IPS X 3/8" IPS angle stop loose key  
**PFCAT22C** - 3/8" IPS X 3/8" OD angle stop round wheel  
**PFCAT22CLK** - 3/8" IPS X 3/8" OD angle stop loose key  
**PFCATT33CLK** - 1/2" IPS X 1/2" IPS angle stop loose key  
**PFCAT32C** - 1/2" IPS X 3/8" OD angle stop round wheel  
**PFCAT32CLK** - 1/2" IPS X 3/8" OD angle stop loose key  
**PFCAT33C** - 1/2" IPS X 1/2" OD angle stop round wheel  
**PFCAC32C** - 5/8" OD X 3/8" OD angle stop round wheel  
**PFCAC32CLK** - 5/8" OD X 3/8" OD angle stop loose key  
**PFCAS32C** - 1/2" SWT X 3/8" OD angle stop round wheel  
**PFCAS32CLK** - 1/2" SWT X 3/8" OD angle stop loose key  
**PFCAZ32C** - 1/2" SWT W/EXT X 3/8" OD angle stop round wheel  
**PFCAZ32CLK** - 1/2" SWT W/EXT X 3/8" OD angle stop loose key

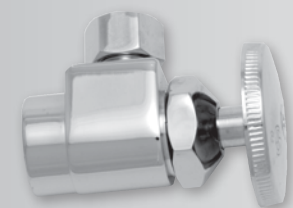
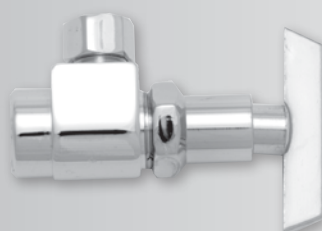
- Solid brass construction and chrome-plated with round wheel handle or loose key as noted
- NSF/ANSI Std. 61 compliant

### LEAD FREE CODE

**PFXCAT32C**  
**PFXCAT32CLK**  
**PFXCAT33C**  
**PFXCAC32C**

N/A  
 N/A  
 N/A  
 N/A  
 N/A  
 N/A  
 N/A  
 N/A  
 N/A  
 N/A  
 N/A  
 N/A  
 N/A

## Heavy Individual Stops



- PFHAT32C** - 1/2" IPS X 3/8" OD angle stop round wheel  
**PFHAT32CLK** - 1/2" IPS X 3/8" OD angle stop loose key  
**PFHAT33CLK** - 1/2" IPS X 1/2" OD angle stop loose key  
**PFHAC32CLK** - 5/8" OD X 3/8" OD angle stop loose key

- Solid brass construction and chrome-plated with round wheel handle or loose key as noted
- NSF/ANSI Std. 61 compliant



# Water Hammer Arrestors

Dimensions may vary (+) or (-) 1/4". Numbers in () are mm.

## Dimensions (Inches)

Size	SWA (Sweat)		SC (MNPT)			
	A	B	A	B	C	TPI
1/2	0.728	5.601	0.630	5.394	-	14
3/4	0.807	5.601	0.650	7.539	-	14
1	0.984	7.784	0.810	8.150	-	11
1-1/4	1.100	8.315	0.880	10.786	9.906	11
1-1/2	-	-	0.940	11.466	10.526	11
2	-	-	0.890	14.841	13.951	11

## Standard Materials

Ref. No.	Description	Material	Qty
1	Body	Brass JIS3602	1
2	Cylinder	Copper C12200	1
3	Piston	Brass JIS3602	1
4	Cylinder Cap	Brass JIS3602	1
5	O-ring	EPDM	2 (3 on SWA)
6	Valve	Stainless Steel	1 (SC Only)
7	Valve Cap	Brass JIS3602	1 (SC Only)
8	Cap O-ring	EPDM	1 (SC Only)
9	Retainer	Brass JIS3602	1 (SC Only)

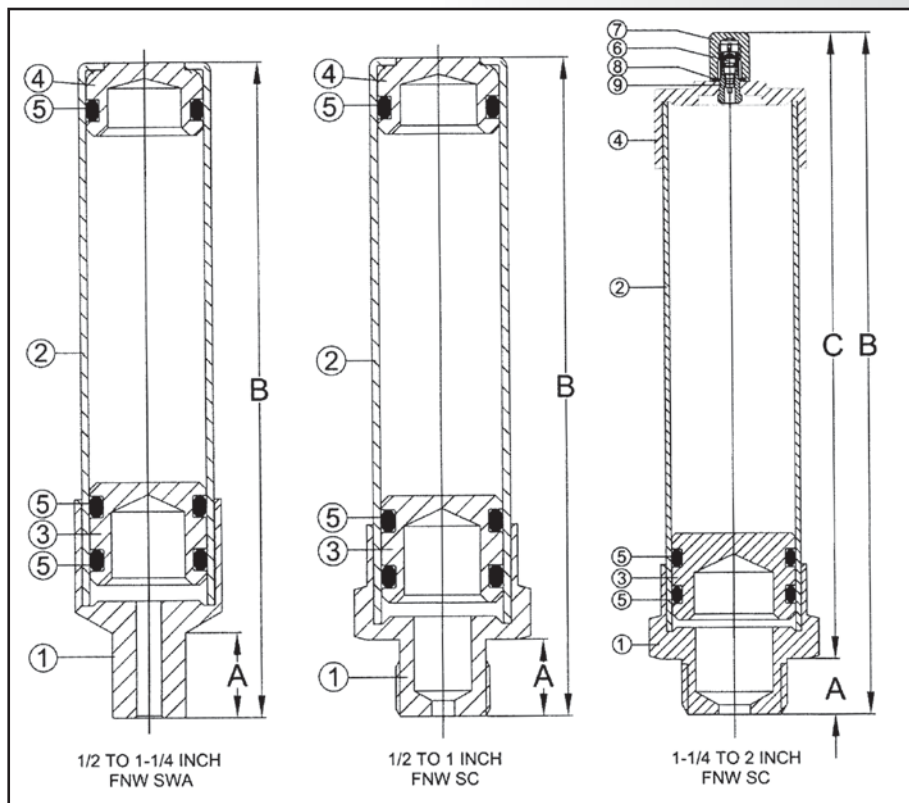
**FNWSWA500** - copper sweat 1/2" (12.7mm)  
**FNWSWA750** - copper sweat 3/4" (19mm)  
**FNWSWA1000** - copper sweat 1" (25.4mm)  
**FNWSWA1250** - copper sweat 1-1/4" (31.8mm)

**FNWSC500** - male NPT 1/2" (12.7mm)  
**FNWSC750** - male NPT 3/4" (19mm)  
**FNWSC1000** - male NPT 1" (25.4mm)  
**FNWSC1250** - male NPT 1-1/4" (31.8mm)  
**FNWSC1500** - male NPT 1-1/2" (38.1mm)  
**FNWSC2000** - male NPT 2" (50.8mm)

- Max. pressure: 600 PSI
- Working pressure: 60 to 400 PSI
- Temperature: - 33°F to 180°F (0.6°C to 86.7°C)
- Low lead brass
- Vertical or horizontal installation
- Can be installed in systems without need for access panels
- ASSE 1010-2004 listed
- cIAMPD listed (cUPC)

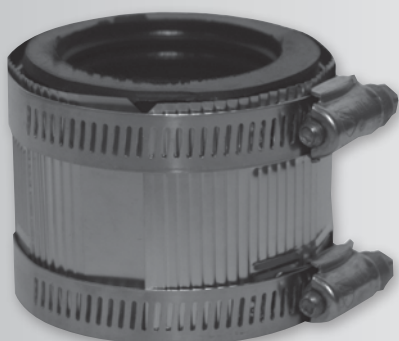
## LEAD FREE CODE

**FNWXSC500**  
**FNWXSC750**  
**FNWXSC1000**  
**FNWXSC1250**  
**FNWXSC1500**  
**FNWXSC2000**



Dimensions may vary (+) or (-) 1/4". Numbers in () are mm.

## No-Hub Couplings



- PFNHCJ** - 1-1/2" (38.1mm) standard duty
- PFNHCK** - 2" (50.8mm) standard duty
- PFNHCM** - 3" (76.2mm) standard duty
- PFNHCP** - 4" (101.6mm) standard duty
- PFNHCS** - 5" (127mm) standard duty
- PFNHCU** - 6" (152.4mm) standard duty
- PFNHCCX** - 8" (203.2mm) standard duty
- PFNHC10** - 10" (254mm) standard duty
- PFNHRCKJ** - 2" X 1-1/2" (50.8mm x 38.1mm) reducing
- PFNHRCKM** - 3" X 2" (76.2mm x 50.8mm) reducing
- PFNHRCPM** - 4" X 3" (101.6mm x 76.2mm) reducing

- 1/2" (12.7mm) and 9/16" (14.3mm) band widths with 5/16" (7.9mm) hex-head screw applies 60 in.-lbs. of installation torque to the band/shield assembly



- PFNHHMDCJ** - 1-1/2" (38.1mm) medium duty, yellow w/ 5/16" (7.9mm) screw
- PFNHHMDCX** - 2" (50.8mm) medium duty, yellow w/ 5/16" (7.9mm) screw
- PFNHHMDCM** - 3" (76.2mm) medium duty, yellow w/ 5/16" (7.9mm) screw
- PFNHHMDCP** - 4" (101.6mm) medium duty, yellow w/ 5/16" (7.9mm) screw
- PFNHHMDCS** - 5" (127mm) medium duty, yellow w/ 5/16" (7.9mm) screw
- PFNHHMDCU** - 6" (152.4mm) medium duty, yellow w/ 5/16" (7.9mm) screw
- PFNHHMDCX** - 8" (203.2mm) medium duty, yellow w/ 5/16" (7.9mm) screw
- PFNHHMDC10** - 10" (254mm) medium duty, yellow w/ 5/16" (7.9mm) screw

- 5/16" (7.9mm) hex-head screw is designed to apply the full load of 80 in.-lbs. of installation torque to the band/shield assembly
- CSA approved



- PFNHHHDCJ** - 1-1/2" (38.1mm) heavy duty, green w/ 3/8" (9.5mm) screw
- PFNHHHDCX** - 2" (50.8mm) heavy duty, green w/ 3/8" (9.5mm) screw
- PFNHHHDCM** - 3" (76.2mm) heavy duty, green w/ 3/8" (9.5mm) screw
- PFNHHHDCP** - 4" (101.6mm) heavy duty, green w/ 3/8" (9.5mm) screw
- PFNHHHDCS** - 5" (127mm) heavy duty, green w/ 3/8" (9.5mm) screw
- PFNHHHDCU** - 6" (152.4mm) heavy duty, green w/ 3/8" (9.5mm) screw
- PFNHHHDCX** - 8" (203.2mm) heavy duty, green w/ 3/8" (9.5mm) screw
- PFNHHHDC10** - 10" (254mm) heavy duty, green w/ 3/8" (9.5mm) screw
- PFNHWBC12** - 12" (304.8mm) heavy duty, green w/ 3/8" (9.5mm) screw
- PFNHWBC15** - 15" (381mm) heavy duty, green w/ 3/8" (9.5mm) screw

- 3/8" (9.5mm) hex head screw is designed to apply the full load of 80 in.-lbs. of installation torque to the band/shield assembly
- CSA approved

Conforms to CISPI 310 and comply with ASTM, C564, ASTM C1277, IAMPO file #3198, Commonwealth of Massachusetts CMR-248 and City of New York MEA 253-98-E. Gaskets are made from an elastomeric compound that meets the requirements of ASTM C564.

# OUR Commitment to Offer You GREEN SOLUTIONS

## *Save Water, Save Money, Keep FLUSH POWER*

PROFLO's High Efficiency Toilets (PF9300 Series and PF9400 Series) use 20% less water (1.28 gpf) than standard low-consumption toilets at 1.6 gpf, which translates to even more savings. The Dual Flush (PF9300 Series) offers 1.6 or 1.1 gpf – all without sacrificing flush power and hard-earned cash.

### ***Product Features:***

- 2" glazed trapway
- Available in round, elongated and ADA
- Meets ANSI ASME A112. 19.14-2006 and ASME A112. 19.2M
- Available in white
- Seat and supply sold separately



***PF9300 Series***



***PF9400 Series***



Green Solutions

© 2011 Ferguson Enterprises, Inc. All Rights Reserved

For more information on PROFLO products  
please contact your local Ferguson branch.

[PROFLO.com](http://PROFLO.com)

[Ferguson.com](http://Ferguson.com)

we sell



PL PF-200 6468 01/11